

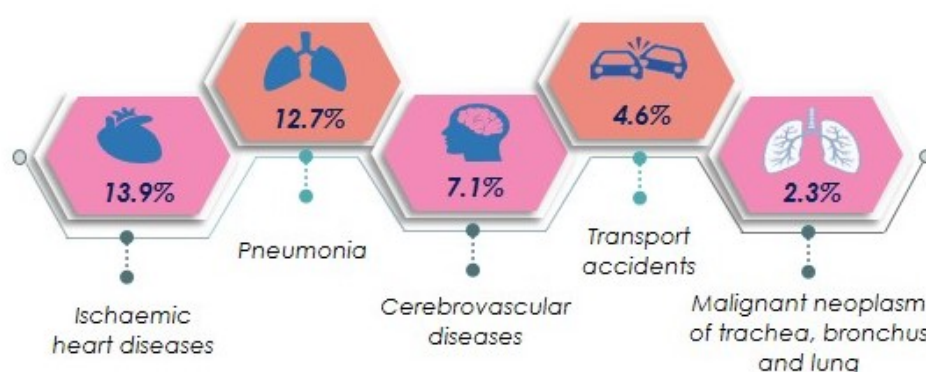


STATISTICS ON CAUSES OF DEATH, MALAYSIA, 2018

i. Principal Causes of Death

Ischaemic heart diseases remains as the principal causes of death

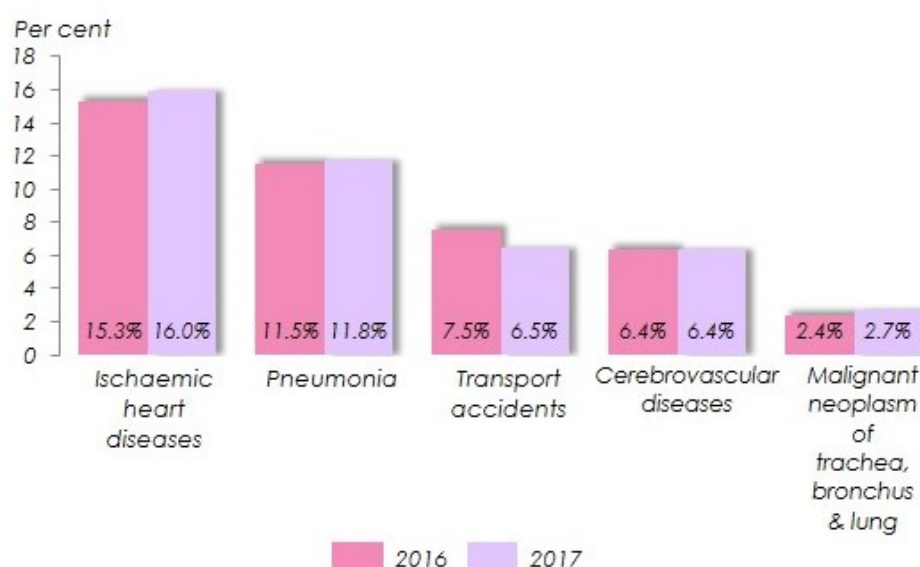
In 2017, the per cent of deaths caused by Ischaemic heart diseases was 13.9 per cent, followed by Pneumonia (12.7%), Cerebrovascular diseases (7.1%), Transport accidents (4.6%) and Malignant neoplasm of trachea, bronchus and lung (2.3%).



ii. Principal Causes of Death by Sex

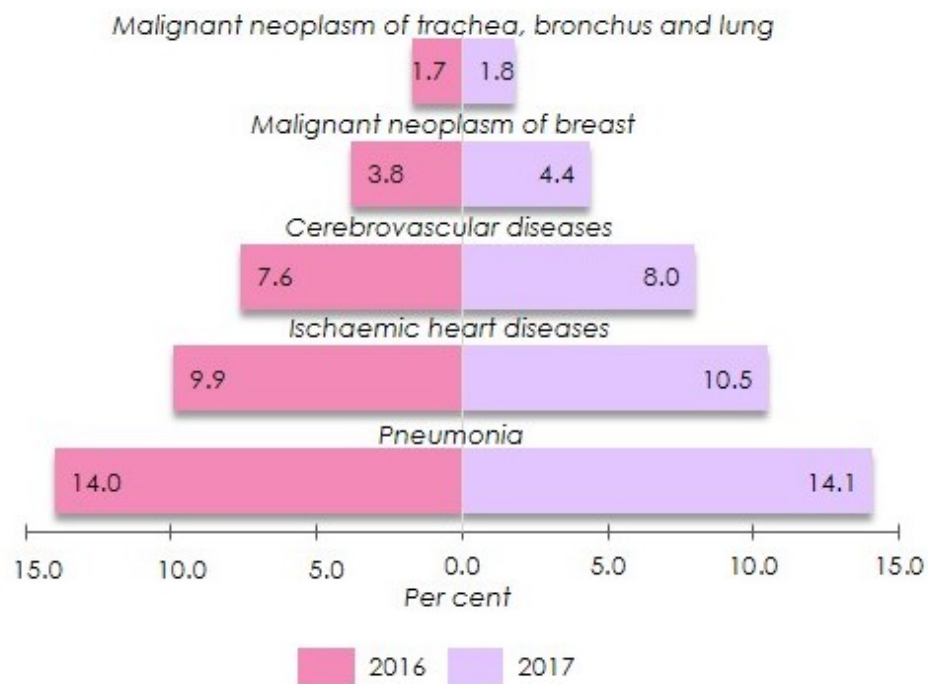
• The five principal causes of death for males unchanged

Ischaemic heart diseases recorded the highest percentage of 16.0 per cent, followed by Pneumonia (11.8%), Transport accidents (6.5%), Cerebrovascular diseases (6.4%) and Malignant neoplasm of trachea, bronchus & lung (2.7%).



• Malignant neoplasm of breast recorded the highest change in percentage points for female

Malignant neoplasm of breast for female recorded the highest changes of 0.6 percentage points from 3.8 per cent (2016) to 4.4 per cent (2017).



iii. Causes of Death by Stratum

Ischaemic heart diseases and pneumonia are the principal causes of death by stratum

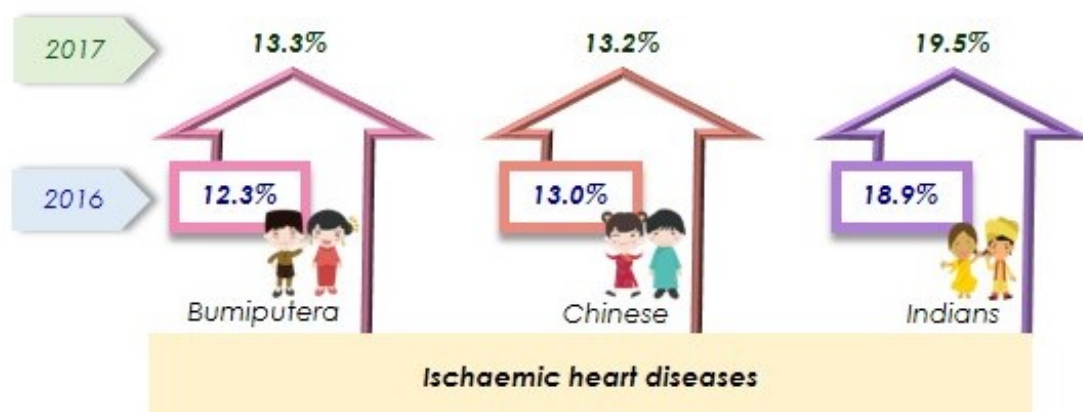
The principal causes of death in urban areas was Ischaemic heart diseases (14.4%) while Pneumonia (13.4%) was the principal causes of death in rural areas.



iv. Causes of Death by Major Ethnic Group

Ischaemic heart diseases is the principal causes of death for all major ethnic groups

Bumiputera recorded the highest increase of 1.0 percentage point from 12.3 per cent (2016) to 13.3 per cent (2017).

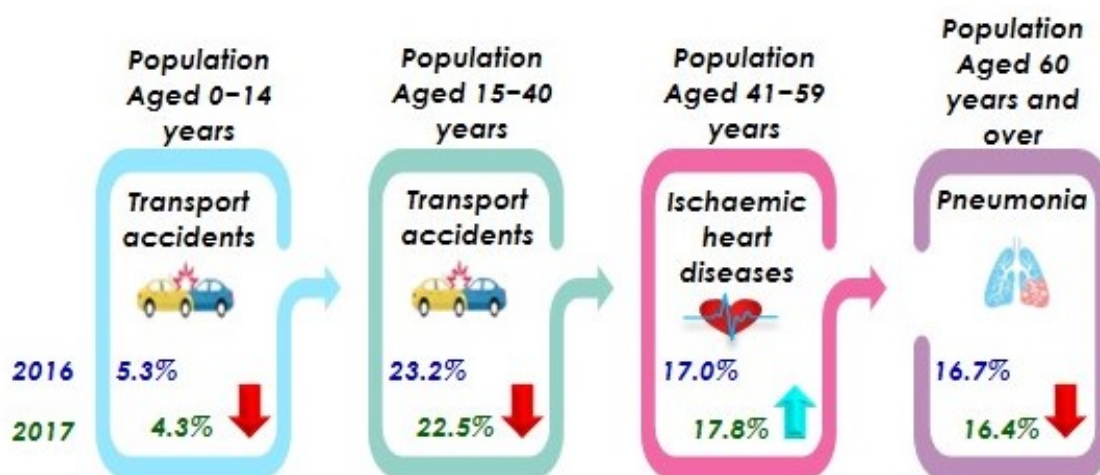


v. Causes of Death by Selected Age group

- Population aged 15 - 40 years

Transport accidents was the principal causes of death for the youth

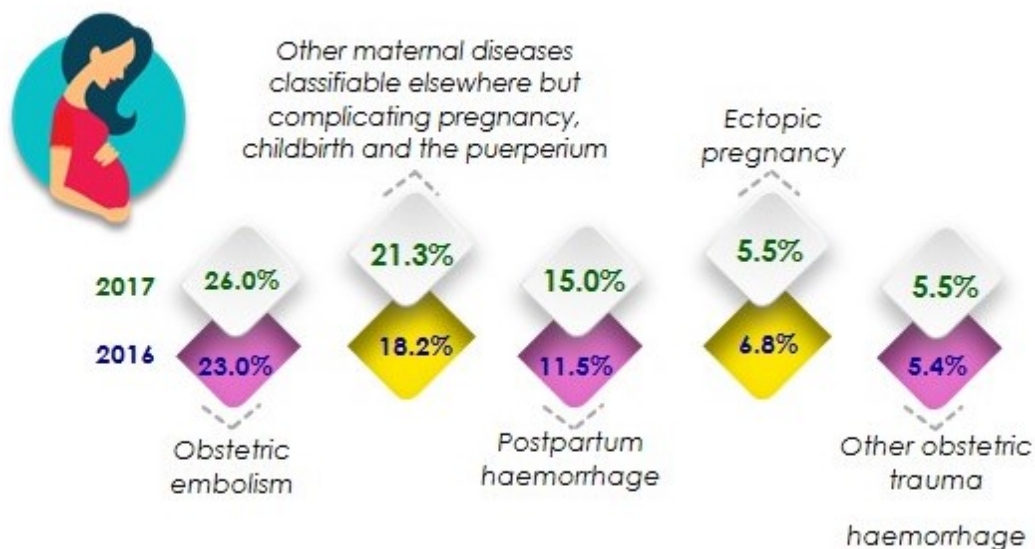
Transport accidents was the principal causes of death for population aged 15–40 years in 2017. The percentage of deaths caused by Transport accidents in 2017 was 22.5 per cent, declined 0.7 percentage points as compared to 2016.



vi. Principal Causes of Maternal Death

Obstetric embolism remains the principal causes of maternal death

Obstetric embolism was the main principal causes of death for maternal death. In 2017, the percentage of deaths caused by Obstetric embolism were 26.0 per cent.





ISCHAEMIC HEART DISEASES 2017

remained as principal causes of death

Causes of death due to Ischaemic heart diseases has increased

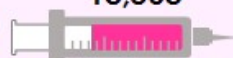


54%

as compared to
10 years ago

2017

13,503



2007

8,776



37 deaths per day
due to Ischaemic heart
diseases as compared
to 24 deaths in 2007

Highest percentage increase for causes of death

Male



16.0%

15.3%

2017

2016

Female



4.4%

3.8%



Ischaemic heart diseases

increased **0.7** percentage
points as compared to 2016



Malignant neoplasm of breast

increased **0.6** percentage
points as compared to 2016



Ischaemic heart diseases
is the principal
causes of death for
major ethnic
groups



Bumiputera

13.3%



Chinese

13.2%



Indians

19.5%

Transport accidents
is the principal
causes of death for
the youth
(15-40 years)



22.5%



26.0%
Obstetric embolism
is the principal
causes of maternal
death

Note: The analysis is based on medically certified causes of death

Source: Statistics on Causes of Death, Malaysia, 2018

Released By:

**DATO' SRI DR. MOHD UZIR MAHIDIN
CHIEF STATISTICIAN MALAYSIA
DEPARTMENT OF STATISTICS, MALAYSIA**

#myHariBulan# #myBulan# #myTahun#

Contact person:

Ho Mei Kei
Public Relation Officer
Strategic Communication and International Division
Department of Statistics, Malaysia
Tel : +603-8885 7942
Fax : +603-8888 9248
Email : mkho[at]dosm.gov.my

Contact person:

Baharudin Mohamad
Public Relation Officer
Strategic Communication and International Division
Department of Statistics Malaysia
Tel : +603-8090 4681
Fax : +603-8888 9248
Email : baharudin[at]dosm.gov.my

Copyright ©2025 Department of Statistics Malaysia Official Portal. All Rights Reserved.