

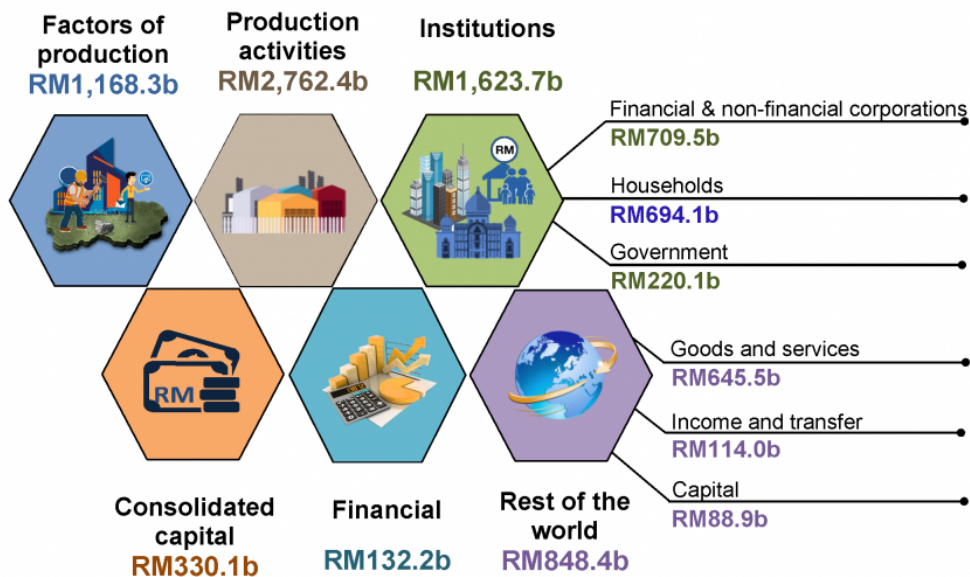


## SOCIAL ACCOUNTING MATRIX 2015

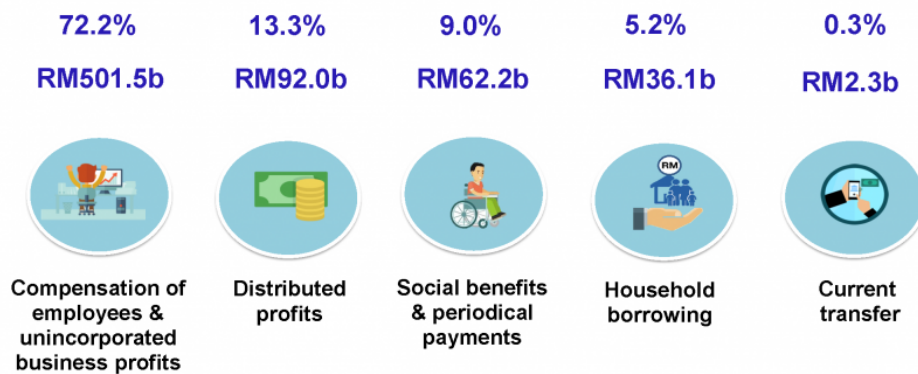


### Main Findings of Social Accounting Matrix

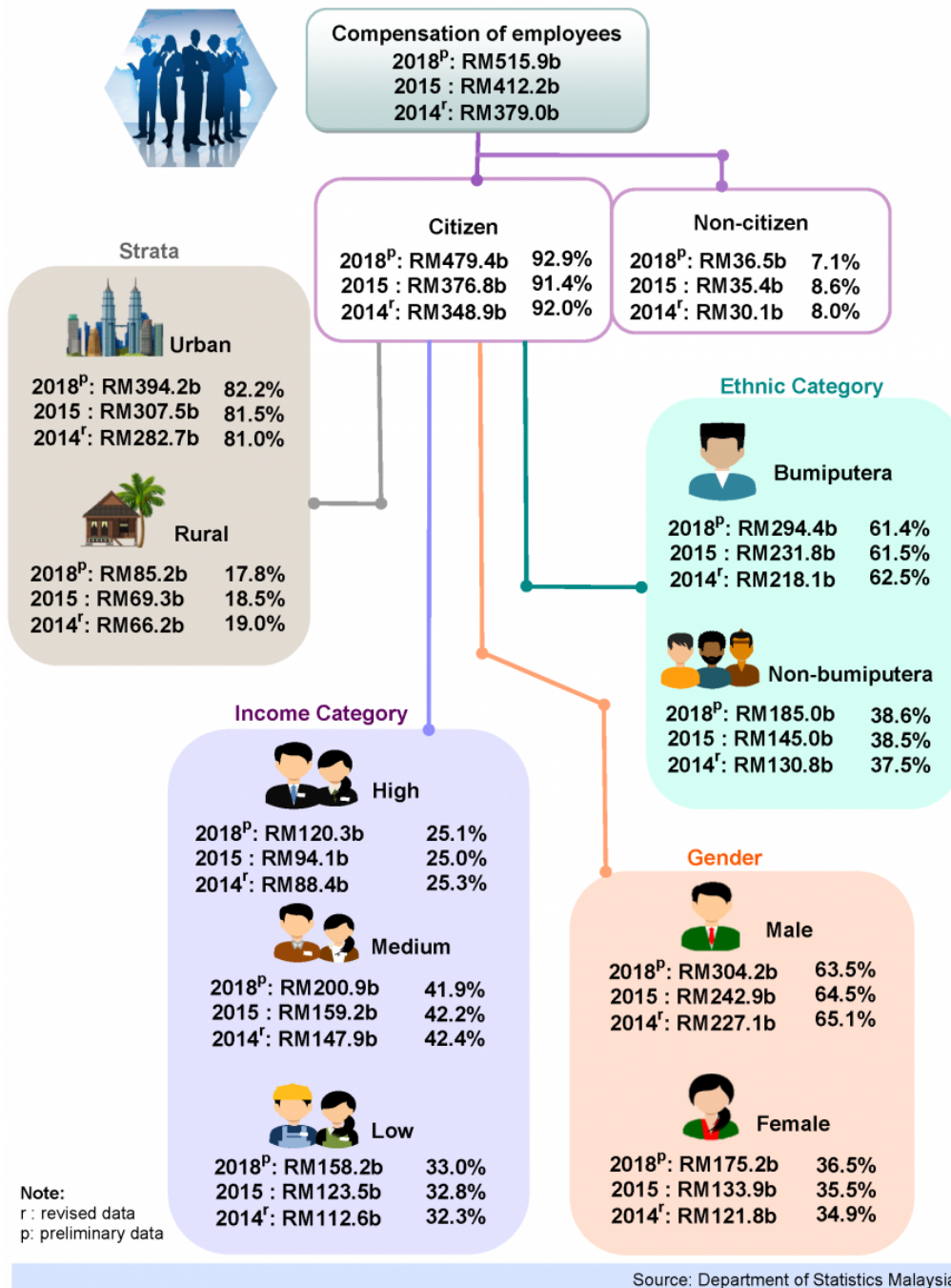
#### SAM 2015 at Macro Level



#### Household Income Distribution 2015



## Compensation of Employees for 2014<sup>r</sup>, 2015 and 2018<sup>p</sup>

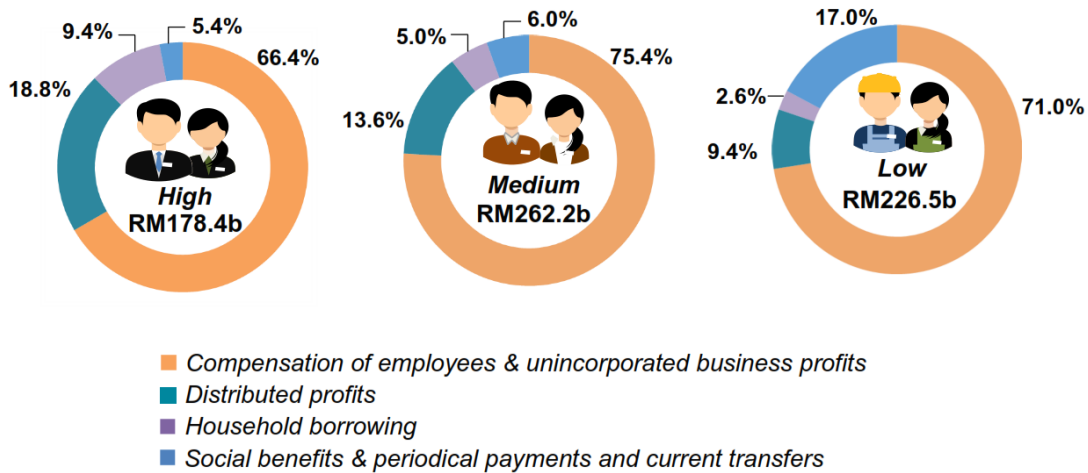


## HOUSEHOLD INCOME DISTRIBUTION WITH TOTAL HOUSEHOLD INCOME RM694.1 BILLION

In 2015, total household income recorded RM694.1 billion with compensation of employees & unincorporated business profits as the main contributor with a value of RM501.5 billion (72.2%). Distributed profits as well as social benefits & periodical payments contributed RM92.0 billion (13.3%) and RM62.2 billion (9.0%) respectively.

## DISTRIBUTION OF HOUSEHOLD INCOME FOR CITIZEN BY INCOME CATEGORY

Total household income for citizen in Malaysia recorded a value of RM667.1 billion in 2015, where the high income category registered RM178.4 billion, medium income category RM262.2 billion and low income category RM226.5 billion. The sources of household income include compensation of employees & unincorporated business profits, distributed profits, household borrowing, social benefits & periodical payments and current transfers.

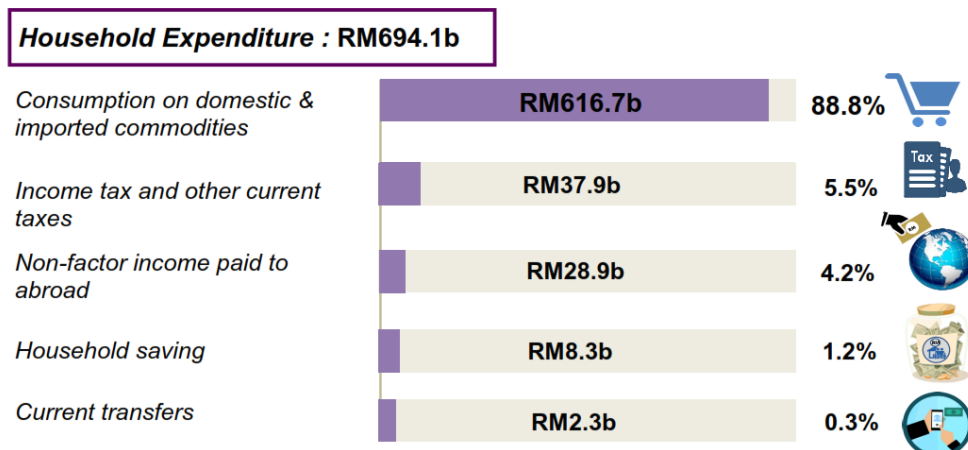


Compensation of employees & unincorporated business profits was the main income for households in all categories of income. Distributed profits was the second largest income received by high income category and medium income category with a share of 18.8 per cent and 13.6 per cent respectively. Meanwhile, low income category received higher social benefits & periodical payments and current transfer 17.0 per cent as compared with high income category 5.4 per cent and medium income category 6.0 per cent.

## HOUSEHOLD EXPENDITURE DOMINATED BY THE CONSUMPTION ON DOMESTIC AND IMPORTED COMMODITIES

Meanwhile, consumption on domestic & imported commodities was the main expenditure for households amounted RM616.7 billion (88.8%). Total income tax & other current taxes paid by households was RM37.9 billion (5.5%) and non-factor income paid to abroad was RM28.9 billion (4.2%).

Household expenditure: Value and percentage share



Social Accounting Matrix 2015 publication also includes the revised compensation of employee for 2014 and the 2018 preliminary data for compensation of employee and income taxes. More information on the Social Accounting Matrix can be obtained from the DOSM website at [www.dosm.gov.my](http://www.dosm.gov.my).

**Released By:**

**DATO' SRI DR. MOHD UZIR MAHIDIN  
CHIEF STATISTICIAN MALAYSIA  
DEPARTMENT OF STATISTICS, MALAYSIA**

 [DrUzir\\_Mahidin](#)   [Dr\\_Uzir](#)

**20 December 2019**

**Contact person:**

**Rohaida binti Mohamad**

Public Relation Officer  
Strategic Communication and International Division  
Department of Statistics, Malaysia  
Tel : +603-8885 7942  
Fax : +603-8888 9248  
Email : rohaida.mohamad[at]dosm.gov.my

**Contact person:**

Baharudin Mohamad  
Public Relation Officer  
Strategic Communication and International Division  
Department of Statistics Malaysia  
Tel : +603-8090 4681  
Fax : +603-8888 9248  
Email : baharudin[at]dosm.gov.my

**Copyright ©2025 Department of Statistics Malaysia Official Portal. All Rights Reserved.**