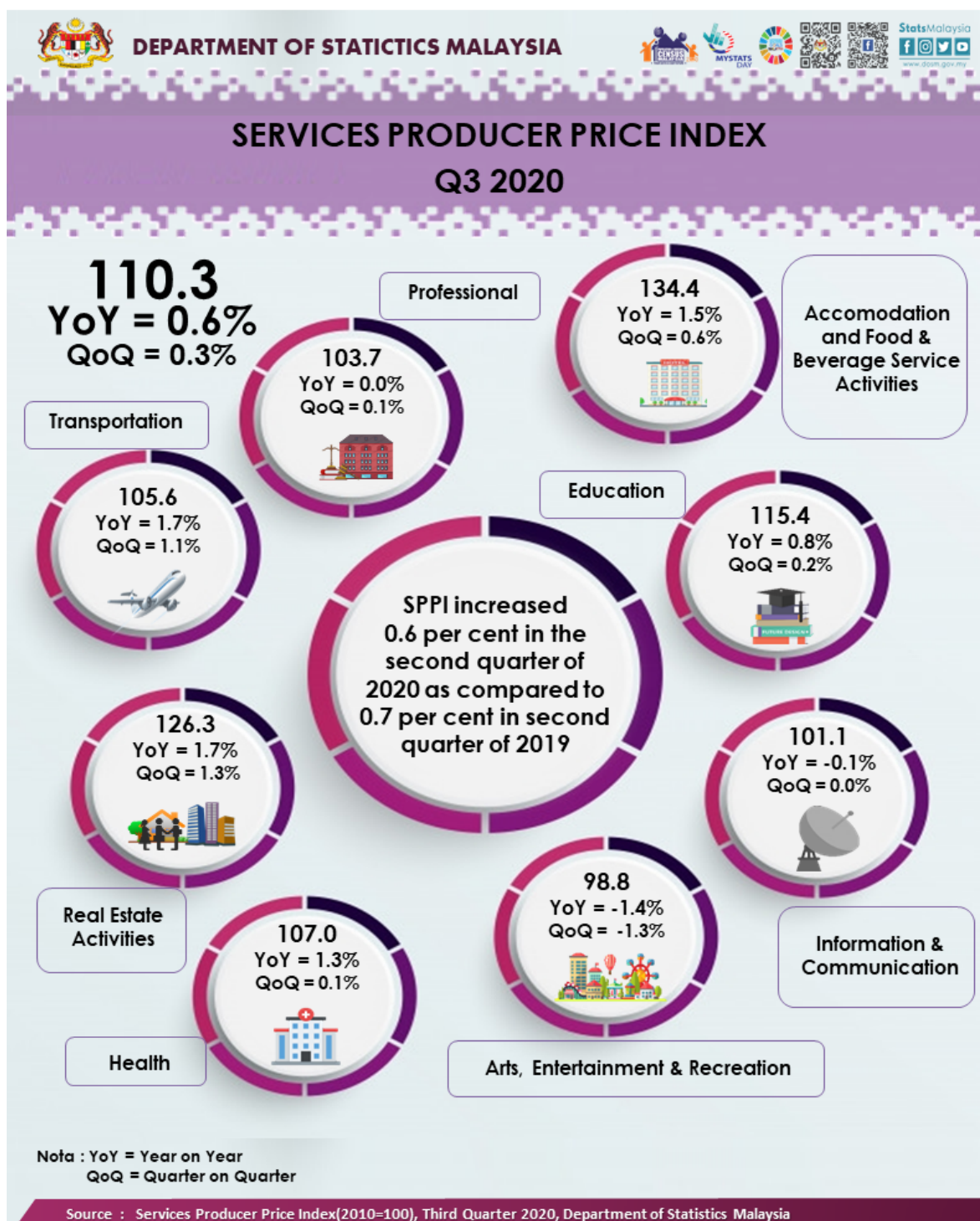




## SERVICES PRODUCER PRICE INDEX, THIRD QUARTER OF 2020



### SERVICES PRODUCER PRICE INDEX (2010=100)

#### THIRD QUARTER 2020

The Services Producer Price Index (SPPI) for the third quarter of 2020 increased 0.6 per cent to 110.3 as compared to 109.6 in the same quarter of the preceding year. The main sub-sectors that contributed to the increase were Transportation (1.7%), Real Estate Activities (1.7%), Accommodation and Food &

Beverage Service Activities (1.5%), Health (1.3%) and Education (0.8%). However, the index for Arts, Entertainment & Recreation and Information & Communication decreased by 1.4 per cent and 0.1 per cent respectively. Index for Professional remained unchanged.

On the Quarterly basis, the index for the third quarter 2020 increased 0.3 per cent. The increase was contributed by the following sub-sectors: Real Estate Activities (1.3%), Transportation (1.1%), Accommodation and Food & Beverage Service Activities (0.6%), Education (0.2%), Health (0.1%) and Professional (0.1%). Arts, Entertainment & Recreation decreased 1.3 per cent while Information & Communication indices remained unchanged.

**Table 1: Services Producer Price Index (2010=100), Third Quarter 2020**

<b>Subsector</b>	<b>Index</b>			<b>Changes %</b>	
	<b>Q3 2019</b>	<b>Q2 2020</b>	<b>Q3 2020</b>	<b>Q3 2020/ Q2 2020</b>	<b>Q3 2020/ Q3 2019</b>
<b>TOTAL</b>	<b>109.6</b>	<b>110.0</b>	<b>110.3</b>	<b>0.3</b>	<b>0.6</b>
<b>Transportation</b>	103.8	104.5	105.6	1.1	1.7
<b>Accommodation and Food &amp; Beverage Service Activities</b>	132.4	133.6	134.4	0.6	1.5
<b>Information &amp; Communication</b>	101.2	101.1	101.1	0.0	-0.1
<b>Real Estate Activities</b>	124.2	124.7	126.3	1.3	1.7
<b>Professional</b>	103.7	103.6	103.7	0.1	0.0
<b>Education</b>	114.5	115.2	115.4	0.2	0.8
<b>Health</b>	105.6	106.9	107.0	0.1	1.3
<b>Arts, Entertainment &amp; Recreation</b>	100.2	100.1	98.8	-1.3	-1.4

## **TRANSPORTATION**

The SPPI for the Transport sub-sector increased 1.7 per cent in the third quarter of 2020 as compared to the same quarter of the previous year. This increase was contributed by Passenger Air Transport (5.3%), Freight Air Transport (3.6%), Postal Activities (3.1%), Courier Activities (2.8%), Sea & Coastal Water Transport (0.6%) and Other Land Transport (0.2%).

As for the quarterly comparison, the index increased 1.1 per cent over the previous quarter. The positive growth was driven by the Passenger Air Transport (4.1%), Courier Activities (1.0%), Freight Air Transport (0.2%) and Other Land Transport (0.2%). Meanwhile, no changes were recorded for Postal Activities and Sea & Coastal Water Transport indices.

## **ACCOMMODATION AND FOOD & BEVERAGE SERVICE ACTIVITIES**

Annual comparison for the third quarter of 2020 showed the SPPI for Accommodation and Food & Beverage Service Activities increased 1.5 per cent. The increase was driven by Restaurants & Mobile Food Service

Activities (1.9%), Beverage Serving Activities (1.0%) and Event Catering & Other Food Service Activities (0.4%). Meanwhile, the index of Short-term Accommodation Activities decreased 0.3 per cent.

Quarter-on-quarter comparison also recorded an increase of 0.2 per cent. This increase was contributed by Restaurants & Mobile Food Service Activities (0.7%) and Beverage Serving Activities (0.2%). The index for Event Catering & Other Food Service Activities and Short-term Accommodation Activities were unchanged.

## **INFORMATION & COMMUNICATION**

The SPPI for Information & Communication sub-sector registered a decrease of 0.1 per cent in the third quarter of 2020 as compared to the same period last year. This was due to the decline in the Wireless Telecommunication Activities (0.2%). However, the Computer Programming, Consultancy & Related Activities index showed an increase of 0.1 per cent. The index remained unchanged for quarter-on-quarter comparisons.

## **REAL ESTATE ACTIVITIES**

The SPPI for Real Estate Activities rose 1.7 per cent as compared to the previous year. The increase was contributed by the index of Real Estate Activities on a Fee or Contract Basis (1.7%). Quarter-on-quarter comparison, the SPPI for this sub-sector increased 1.3 per cent supported by Real Estate Activities on a Fee or Contract Basis (1.3%).

## **PROFESSIONAL**

Annual comparison for the third quarter of 2020 showed that there was no changes for Professional sub-sector. However, on a quarterly basis the SPPI for Professional sub-sector registered an increase of 0.1 per cent.

## **EDUCATION**

The SPPI for Education sub-sector increased 0.8 per cent in the third quarter of 2020 as compared to the same quarter of 2019. The increase was contributed by Secondary Education (3.4%), Higher Education (0.4%) and Pre-Primary & Primary Education (0.2%). The Other Education indices did not record any changes.

As compared to the previous quarter, SPPI for Education sub-sector increased 0.2 per cent in the third quarter 2020. The increase was driven by Secondary Education (1.0%) and Higher Education (0.1%). Meanwhile, Pre-Primary & Primary Education and Other Education indices remained unchanged.

## **HEALTH**

The SPPI for Health sub-sector registered 1.3 per cent increase year-on-year. The increase was contributed by the index of Hospital Activities (1.5%) and Medical & Dental Practice Activities (1.2%). Meanwhile, Other Human Health Activities decreased 0.2 per cent.

On a quarterly basis, the SPPI for this sub-sector recorded an increase of 1.0 per cent. It was contributed by Medical & Dental Practice Activities (0.3%). Nevertheless, Other Human Health Activities declined 0.6 per cent and the index for the Hospital Activities remained unchanged.

## **ARTS, ENTERTAINMENT & RECREATION**

In the third quarter of 2020, the SPPI for Arts, Entertainment & Recreation sub-sector declined 1.4 per cent for year-on-year. This was driven by the index of Gambling & Betting Activities (1.6%) and Other Amusement & Recreation Activities (0.2%). However, the index for Sports Activities increased 0.2 per cent. On a quarterly basis, the SPPI for Arts, Entertainment & Recreation sub-sector also declined 1.3 per cent, driven by Gambling & Betting Activities (1.4%) and Other Amusement & Recreation Activities (0.1%).

### **Released by:**

**DATO' SRI DR. MOHD UZIR MAHIDIN**  
**CHIEF STATISTICIAN MALAYSIA**  
**DEPARTMENT OF STATISTICS, MALAYSIA**

 [DrUzir\\_Mahidin](#)  [Dr\\_Uzir](#) 

**09 NOVEMBER 2020**

### **Contact person:**

Mohd Yusrizal Ab Razak  
Public Relation Officer  
Strategic Communication and International Division  
Department of Statistics, Malaysia  
**Tel** : +603-8885 7942  
**Fax** : +603-8888 9248  
**E-mail** : yusrizal.razak@dosm.gov.my

### **Contact person:**

Baharudin Mohamad  
Public Relation Officer  
Strategic Communication and International Division  
Department of Statistics Malaysia  
**Tel** : +603-8090 4681  
**Fax** : +603-8888 9248  
**Email** : baharudin[at]dosm.gov.my

**Copyright ©2025 Department of Statistics Malaysia Official Portal. All Rights Reserved.**