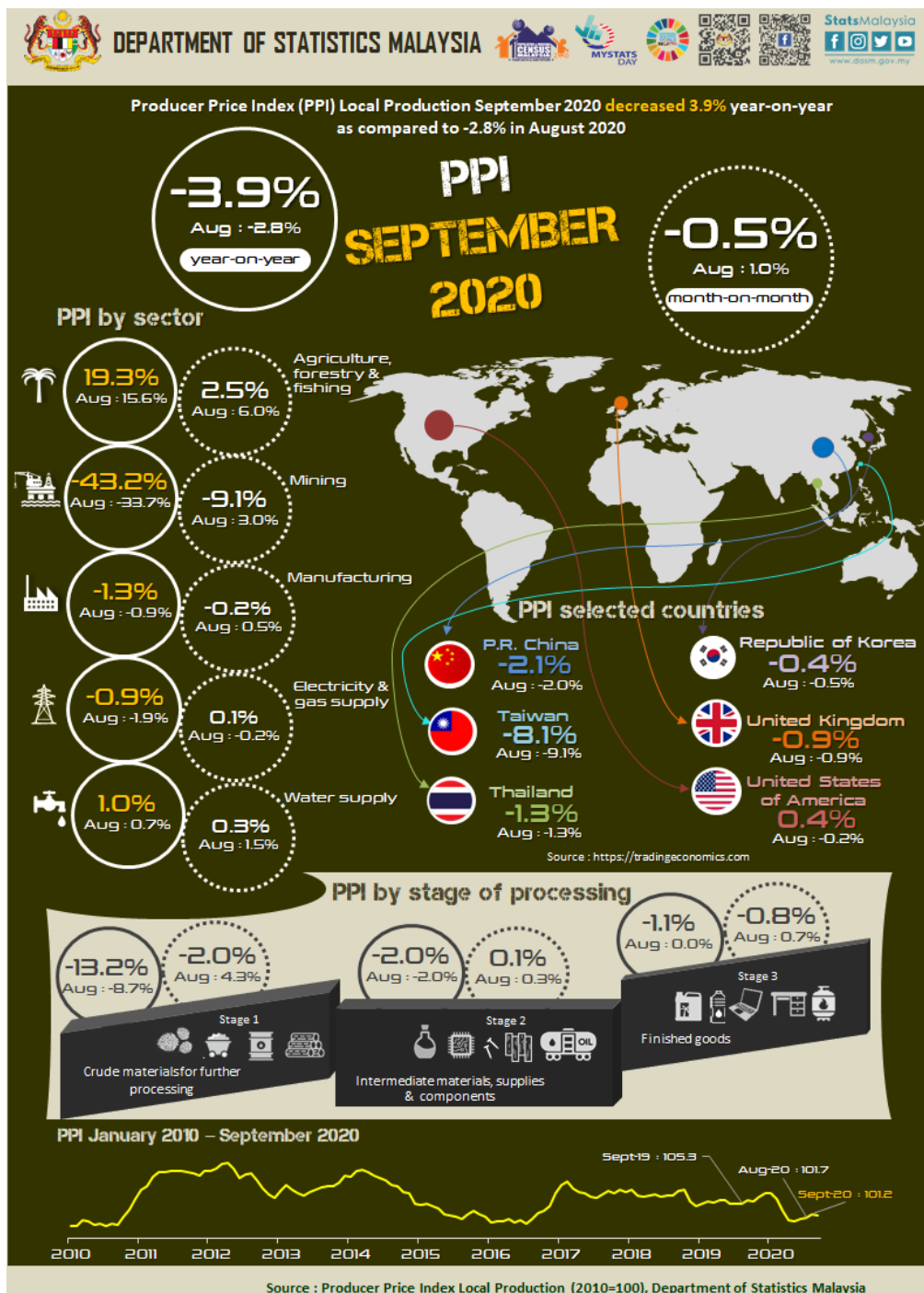




PRODUCER PRICE INDEX MALAYSIA SEPTEMBER 2020



PRODUCER PRICE INDEX (2010=100) BY SECTOR (MSIC 2008)

In September 2020, the Producer Price Index (PPI) local production fell 3.9 per cent year-on-year as compared to negative 2.8 per cent recorded in August 2020, declined for seven months since March 2020.

The decreased in the overall index was attributed by the decline in Mining (-43.2%), Manufacturing (-1.3%) and Electricity & gas supply (-0.9%). Conversely, the index of Agriculture, forestry & fishing and Water supply rose 19.3 per cent and 1.0 per cent respectively.

On a monthly basis, the PPI local production edged down by 0.5 per cent in September 2020 after recorded an increase of 1.0 per cent in August 2020. The decreased was mainly due to the decline in the index of Mining (-9.1%) and Manufacturing (-0.2%). However, the index of Agriculture, forestry & fishing, Water supply and Electricity & gas supply rose 2.5 per cent, 0.3 per cent and 0.1 per cent respectively. PPI local production for the period of January-September 2020 registered a decrease of 2.6 per cent as compared to 2.0 per cent decline in the same period of the previous year. [Table 1]

Table 1 : Producer Price Index (2010=100) Local Production by Sector (MSIC 2008), Malaysia

| Sector | Code | Weight | Index | | Percentage Change | | | | |
|---------------------------------|------|----------------|--------------|-----------------------|-----------------------|-------------------------|------------------------|-----------------------|------------------------|
| | | | Sept 2020 | Year-on-Year | | | Month-on-Month | | |
| | | | | Jul 2020/ Jul 2019 | Aug 2020/ Aug 2019 | Sept 2020/ Sept 2019 | Jul 2020/ June 2020 | Aug 2020/ Jul 2020 | Sept 2020/ Aug 2020 |
| Total | | 100.000 | 101.2 | -3.5 | -2.8 | -3.9 | 0.4 | 1.0 | -0.5 |
| Agriculture, forestry & fishing | A | 6.730 | 113.5 | 14.6 | 15.6 | 19.3 | 0.9 | 6.0 | 2.5 |
| Mining | B | 7.927 | 58.6 | -37.0 | -33.7 | -43.2 | 8.3 | 3.0 | -9.1 |
| Manufacturing | C | 81.571 | 104.6 | -1.3 | -0.9 | -1.3 | -0.2 | 0.5 | -0.2 |
| Electricity & gas supply | D | 3.442 | 116.4 | -1.3 | -1.9 | -0.9 | -0.5 | -0.2 | 0.1 |
| Water supply | E | 0.330 | 112.7 | -0.6 | 0.7 | 1.0 | 0.2 | 1.5 | 0.3 |

PPI LOCAL PRODUCTION FOR THIRD QUARTER 2020

PPI local production for the third quarter 2020 declined 3.4 per cent to 101.2 as compared to 104.8 in the same quarter of the previous year. The decline was contributed by the index of Mining (-38.0%),

Electricity & gas supply (-1.4%) and Manufacturing (-1.1%). Meanwhile, the index of Agriculture, forestry & fishing and Water supply recorded an increase of 16.5 per cent and 0.4 per cent. On a quarterly basis, the PPI local production increased 1.2 per cent as compared to negative 5.0 per cent in the second quarter 2020. [Table 2]

Table 2 : Average Index and Percentage Change of Quarterly PPI Local Production by Sector

| Sector | Weight | Index | | | % Change | |
|---------------------------------|----------------|--------------|--------------|--------------|---------------------|---------------------|
| | | Q3 2019 | Q2 2020 | Q3 2020 | Q3 2020/ Q3 2019 | Q3 2020/ Q2 2020 |
| Total | 100.000 | 104.8 | 100.0 | 101.2 | -3.4 | 1.2 |
| Agriculture, forestry & fishing | 6.730 | 94.0 | 98.5 | 109.5 | 16.5 | 11.2 |
| Mining | 7.927 | 99.9 | 51.5 | 61.9 | -38.0 | 20.2 |
| Manufacturing | 81.571 | 105.8 | 105.3 | 104.6 | -1.1 | -0.7 |
| Electricity & gas supply | 3.442 | 118.0 | 117.7 | 116.4 | -1.4 | -1.1 |
| Water supply | 0.330 | 111.5 | 110.8 | 111.9 | 0.4 | 1.0 |

PRODUCER PRICE INDEX BY STAGE OF PROCESSING

As compared to the same month a year ago, all stages of processing decreased. Crude materials for further processing slipped by 13.2 per cent followed by Intermediate materials, supplies & components (-2.0%) and Finished goods (-1.1%).

On a monthly comparison, negative changes in the indices were observed in two stages of processing, namely Crude materials for further processing (-2.0%) and Finished goods (-0.8%). Meanwhile, Intermediate materials, supplies & components index rose 0.1 per cent. [Table 3]

Table 3 : Producer Price Index (2010=100), Local Production by Stage of Processing

| Stage of Processing | Code | Weight | Index | | | | | | |
|---|------|----------------|--------------|-----------------------|-----------------------|-------------------------|------------------------|-----------------------|------------------------|
| | | | Sept 2020 | Year-on-Year | | | Percentage Change | | |
| | | | | Jul 2020/ Jul 2019 | Aug 2020/ Aug 2019 | Sept 2020/ Sept 2019 | Jul 2020/ June 2020 | Aug 2020/ Jul 2020 | Sept 2020/ Aug 2020 |
| Total | | 100.000 | 101.2 | -3.5 | -2.8 | -3.9 | 0.4 | 1.0 | -0.5 |
| Crude materials for further processing | 1 | 16.410 | 92.2 | -13.0 | -8.7 | -13.2 | 4.9 | 4.3 | -2.0 |
| Intermediate materials, supplies and components | 2 | 56.119 | 104.3 | -1.9 | -2.0 | -2.0 | -0.8 | 0.3 | 0.1 |
| Finished goods | 3 | 27.471 | 101.0 | -0.4 | 0.0 | -1.1 | -0.1 | 0.7 | -0.8 |

Released by:

DATO' SRI DR. MOHD UZIR MAHIDIN
CHIEF STATISTICIAN MALAYSIA
DEPARTMENT OF STATISTICS, MALAYSIA

 DrUzir_Mahidin   Dr_Uzir

28th October 2020

Contact person:

Mohd Yusrizal Ab Razak
Public Relation Officer
Strategic Communication and International Division
Department of Statistics, Malaysia
Tel : +603-8885 7942
Fax : +603-8888 9248
E-mail : yusrizal.razak[at]dosm.gov.my

Contact person:

Baharudin Mohamad
Public Relation Officer
Strategic Communication and International Division

Department of Statistics Malaysia

Tel : +603-8090 4681

Fax : +603-8888 9248

Email : [baharudin\[at\]dosm.gov.my](mailto:baharudin[at]dosm.gov.my)

Copyright ©2025 Department of Statistics Malaysia Official Portal. All Rights Reserved.