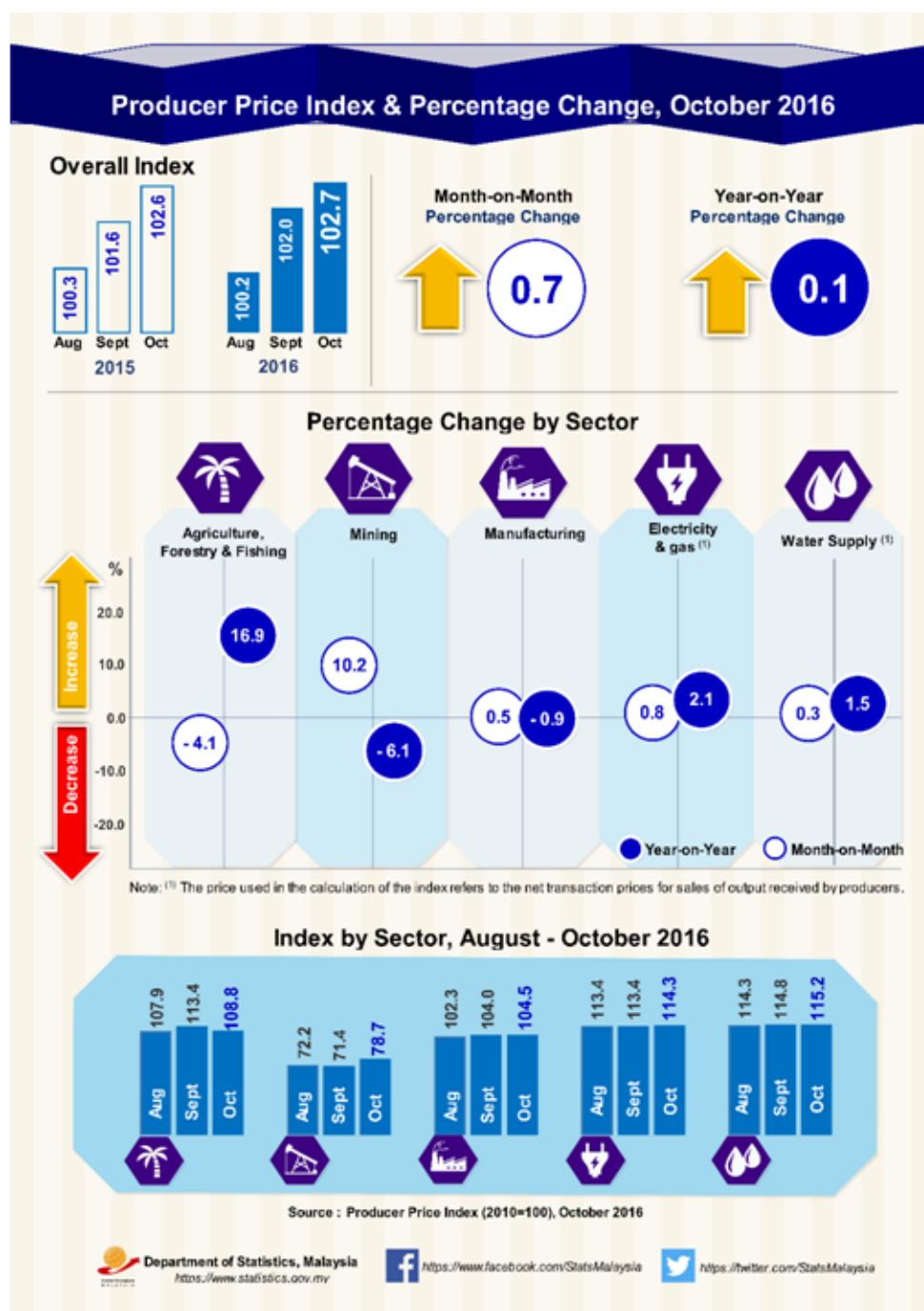




## PRODUCER PRICE INDEX MALAYSIA OCTOBER 2016



## Producer Price Index (2010=100) by Sector (MSIC 2008)

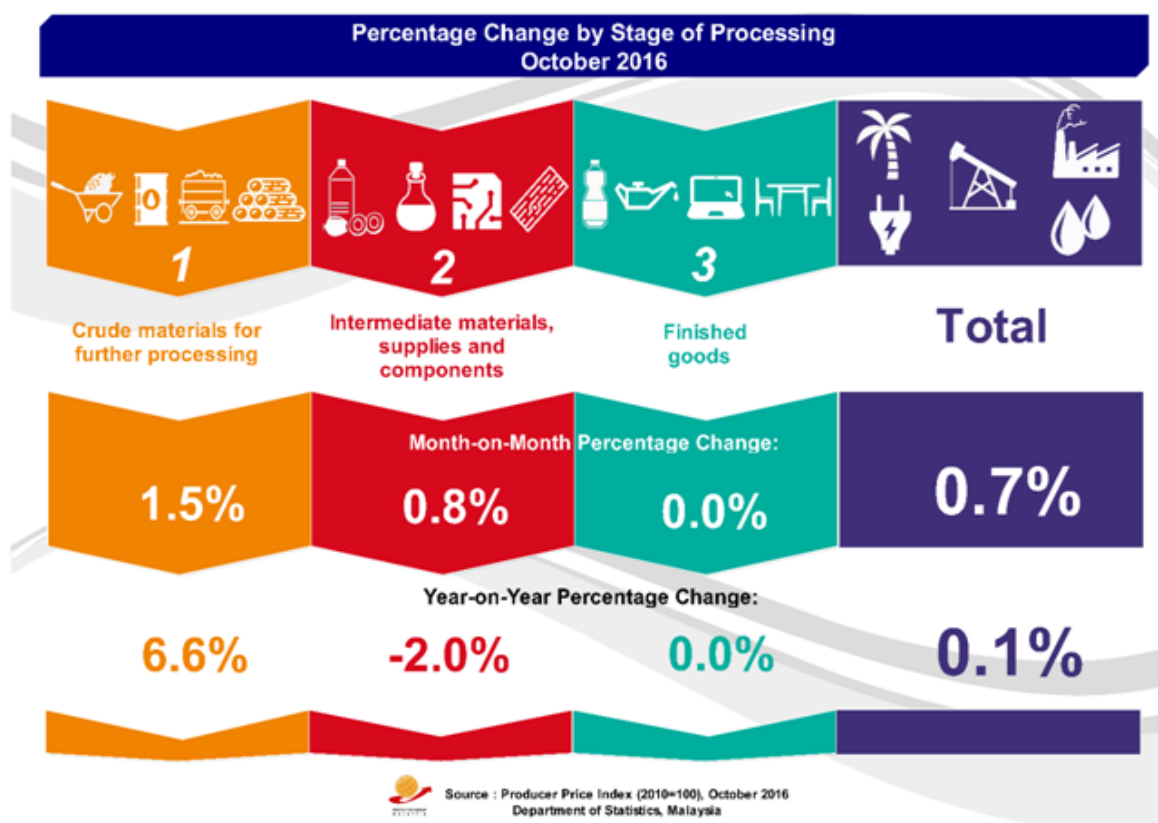
Year-on-year comparison showed that the Producer Price Index (PPI) for local production went up at a slower pace of 0.1 per cent in October 2016. The highest increase was recorded by Agriculture, forestry & fishing index (+16.9%) followed by Electricity & gas (+2.1%) and Water supply (+1.5%). In contrast, the index for Mining and Manufacturing decreased by 6.1 per cent and 0.9 per cent respectively. [Table I]

The PPI for local production inclined by 0.7 per cent in October 2016 compared to September 2016. This was due to increases in four sectors namely, Mining (+10.2%), Electricity & gas (+0.8%), Manufacturing (+0.5%) and Water supply (+0.3%). However, the index for Agriculture, forestry & fishing recorded a decrease of 4.1 per cent.

**Table I : Producer Price Index (2010=100) Local Production by Sector (MSIC 2008), Malaysia**

Sector	Code	Weight	Index	Percentage Change Month-on-Month			Percentage Change Year-on-Year		
			Oct 2016	Aug 2016/ Jul 2016	Sept 2016/ Aug 2016	Oct 2016/ Sept 2016	Aug 2016/ Aug 2015	Sept 2016/ Sept 2015	Oct 2016/ Oct 2015
<b>Total</b>		<b>100.0</b>	<b>102.7</b>	<b>1.2</b>	<b>1.8</b>	<b>0.7</b>	<b>-0.1</b>	<b>0.4</b>	<b>0.1</b>
<b>Agriculture, Forestry &amp; Fishing</b>	<b>A</b>	<b>8.2</b>	<b>108.8</b>	<b>5.8</b>	<b>5.1</b>	<b>-4.1</b>	<b>23.3</b>	<b>28.3</b>	<b>16.9</b>
<b>Mining</b>	<b>B</b>	<b>9.7</b>	<b>78.7</b>	<b>7.8</b>	<b>-1.1</b>	<b>10.2</b>	<b>-6.7</b>	<b>-11.3</b>	<b>-6.1</b>
<b>Manufacturing</b>	<b>C</b>	<b>78.8</b>	<b>104.5</b>	<b>0.3</b>	<b>1.7</b>	<b>0.5</b>	<b>-1.6</b>	<b>-1.1</b>	<b>-0.9</b>
<b>Electricity &amp; gas</b>	<b>D</b>	<b>3.1</b>	<b>114.3</b>	<b>0.4</b>	<b>0.0</b>	<b>0.8</b>	<b>1.3</b>	<b>1.4</b>	<b>2.1</b>
<b>Water supply</b>	<b>E</b>	<b>0.3</b>	<b>115.2</b>	<b>0.4</b>	<b>0.4</b>	<b>0.3</b>	<b>1.9</b>	<b>2.4</b>	<b>1.5</b>

## Producer Price Index by Stage of Processing



The PPI for local production by stage of processing (SOP) inclined by 0.7 per cent in October 2016 compared to the previous month. This inclination was due to increases in the indices for Crude materials for further processing (+1.5%) and Intermediate materials, supplies and components (+0.8%). Meanwhile, the index for Finished goods remained unchanged. [Table II]

As compared with the same month a year ago, the PPI for local production by SOP for October 2016 increased by 0.1 per cent. This was due to an increase in index for Crude materials for further processing (+6.6%). However, index for Intermediate materials, supplies and components decreased by 2.0 per cent, while the index for Finished goods remained unchanged.

**Table II : Producer Price Index (2010=100), Local Production by Stage of Processing**

Stage of Processing	Code	Weight	Index	Percentage Change Month-on-Month			Percentage Change Year-on-Year		
			Oct 2016	Aug 2016/ Jul 2016	Sept 2016/ Aug 2016	Oct 2016/ Sept 2016	Aug 2016/ Aug 2015	Sept 2016/ Sept 2015	Oct 2016/ Oct 2015
<b>Total</b>		<b>100.0</b>	<b>102.7</b>	<b>1.2</b>	<b>1.8</b>	<b>0.7</b>	<b>-0.1</b>	<b>0.4</b>	<b>0.1</b>
<b>Crude materials for further processing</b>	<b>1</b>	<b>20.3</b>	<b>99.2</b>	<b>3.0</b>	<b>4.5</b>	<b>1.5</b>	<b>9.7</b>	<b>10.0</b>	<b>6.6</b>
<b>Intermediate materials, supplies and components</b>	<b>2</b>	<b>53.6</b>	<b>104.1</b>	<b>1.3</b>	<b>1.5</b>	<b>0.8</b>	<b>-3.2</b>	<b>-2.6</b>	<b>-2.0</b>
<b>Finished goods</b>	<b>3</b>	<b>26.1</b>	<b>102.6</b>	<b>0.2</b>	<b>0.3</b>	<b>0.0</b>	<b>0.2</b>	<b>0.1</b>	<b>0.0</b>

**Released By:**

**THE OFFICE OF CHIEF STATISTICIAN MALAYSIA**  
**DEPARTMENT OF STATISTICS, MALAYSIA**

**30 November 2016**

**Contact person:**

Ho Mei Kei  
Public Relation Officer  
Corporate and User Services Division  
Department of Statistics, Malaysia  
Tel : +603-8885 7942  
Fax : +603-8888 9248  
Email : mkho[at]stats.gov.my

**Contact person:**

Baharudin Mohamad  
Public Relation Officer  
Strategic Communication and International Division  
Department of Statistics Malaysia  
Tel : +603-8090 4681  
Fax : +603-8888 9248  
Email : baharudin[at]dosm.gov.my

**Copyright ©2026 Department of Statistics Malaysia Official Portal. All Rights Reserved.**