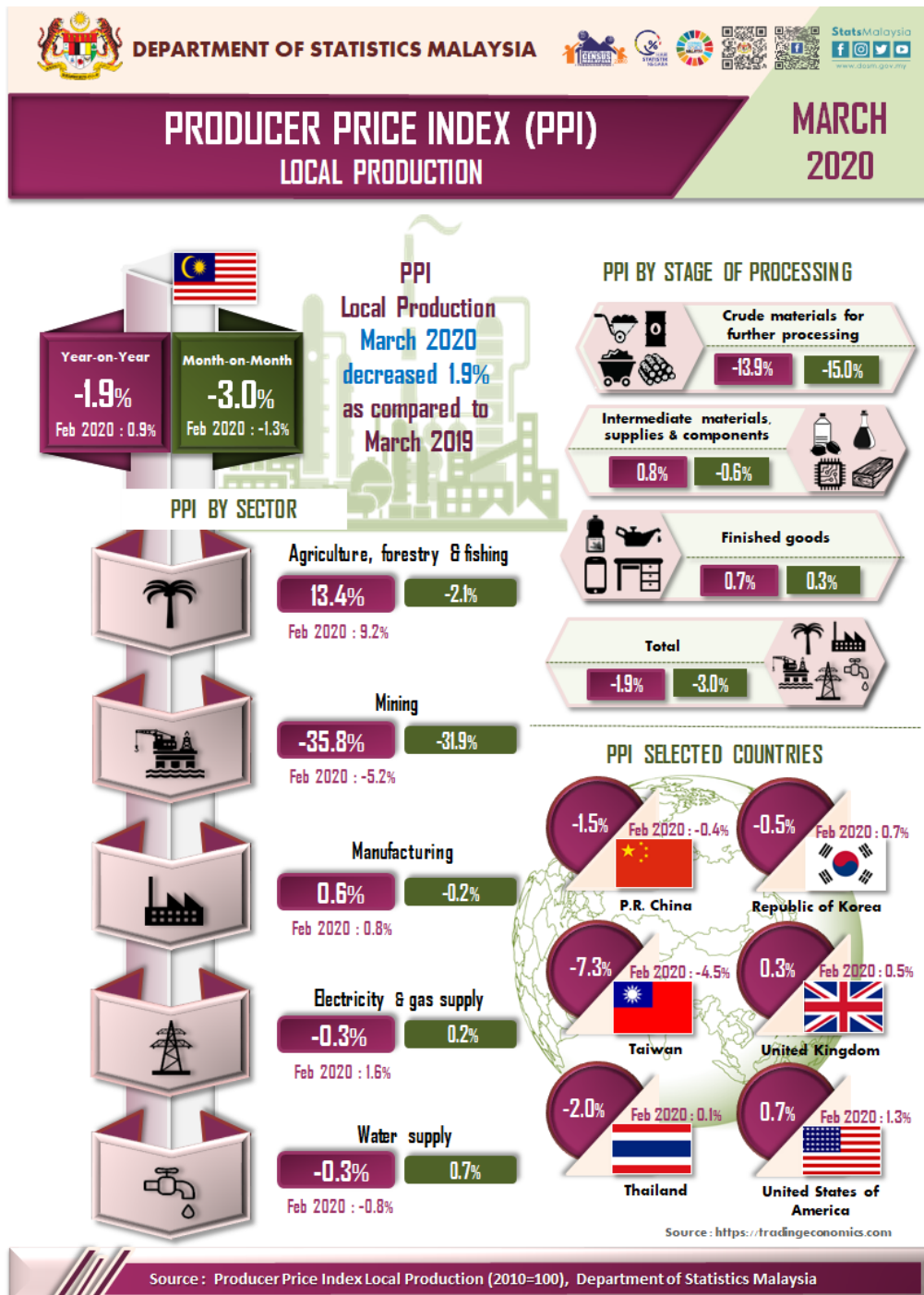




## PRODUCER PRICE INDEX MALAYSIA MARCH 2020



## PRODUCER PRICE INDEX (2010=100) BY SECTOR (MSIC 2008)

The Producer Price Index (PPI) local production decreased 1.9 per cent in March 2020 to 102.7 as against 104.7 in the same month of the previous year. The Mining index registered the highest rate of decline at 35.8 per cent, followed by Electricity & gas supply (-0.3%) and Water supply (-0.3%). In contrast, the index of Agriculture, forestry & fishing surged by 13.4 per cent and Manufacturing index increased by 0.6 per cent.

On a monthly basis, the PPI local production fell 3.0 per cent in March 2020. The drop was led by the decrease in the index of Mining (-31.9%), Agriculture, forestry & fishing (-2.1%) and Manufacturing (-0.2%). However, the index of Water supply and Electricity & gas supply rose 0.7 per cent and 0.2 per cent respectively. [Table 1]

**Table 1 : Producer Price Index (2010=100) Local Production by Sector (MSIC 2008), Malaysia**

Sector	Code	Weights	Index	Percentage Change					
			Mar 2020	Year-on-Year		Mar 2020/ Mar 2019	Month-on-Month		
				Jan 2020/ Jan 2019	Feb 2020/ Feb 2019		Jan 2020/ Dec 2019	Feb 2020/ Jan 2020	Mar 2020/ Feb 2020
<b>Total</b>		<b>100.000</b>	<b>102.7</b>	<b>2.8</b>	<b>0.9</b>	<b>-1.9</b>	<b>-0.1</b>	<b>-1.3</b>	<b>-3.0</b>
Agriculture, forestry & fishing	A	6.730	101.4	18.0	9.2	13.4	3.8	-7.3	-2.1
Mining	B	7.927	64.4	9.2	-5.2	-35.8	-6.8	-9.1	-31.9
Manufacturing	C	81.571	106.8	0.9	0.8	0.6	0.4	0.1	-0.2
Electricity & gas supply	D	3.442	118.4	0.1	1.6	-0.3	0.1	0.3	0.2
Water supply	E	0.330	111.8	-1.2	-0.8	-0.3	0.0	-0.6	0.7

## PPI LOCAL PRODUCTION FOR FIRST QUARTER 2020

PPI local production for the first quarter 2020 increased 0.6 per cent to 105.3 as compared to 104.7 in the same quarter of the previous year. The increase was contributed by Agriculture, forestry & fishing (13.5%), Manufacturing (0.8%) and Electricity & gas supply (0.8%). Meanwhile, the index of Mining and Water supply recorded a decrease of 11.0 per cent and -0.7 per cent. On a quarterly basis, the PPI local production fell 0.9 per cent as compared to the fourth quarter 2019. [Table 2]

**Table 2 : Average Index and Percentage Change of Quarterly PPI Local Production by Sector**

Sector	Weights	Index			% Change	
		Q1 2019	Q4 2019	Q1 2020	Q1 2020/ Q1 2019	Q1 2020/ Q4 2019
<b>Total</b>	<b>100.000</b>	<b>104.7</b>	<b>106.3</b>	<b>105.3</b>	<b>0.6</b>	<b>-0.9</b>
Agriculture, forestry & fishing	6.730	93.0	102.5	105.6	13.5	3.0
Mining	7.927	98.5	107.2	87.7	-11.0	-18.2
Manufacturing	81.571	106.1	106.2	106.9	0.8	0.7
Electricity & gas supply	3.442	117.2	117.3	118.1	0.8	0.7
Water supply	0.330	112.3	111.7	111.5	-0.7	-0.2

## PRODUCER PRICE INDEX BY STAGE OF PROCESSING

As compared with the same month a year ago, the PPI for local production by stage of processing (SOP) for March 2020 declined 1.9 per cent. The decrease was attributed by the Crude materials for further processing at 13.9 per cent. However, the index of Intermediate materials, supplies & components and Finished goods increased 0.8 per cent and 0.7 per cent respectively.

The decrease 3.0 per cent in PPI local production by SOP from previous month was due to the decline in Crude materials for further processing (-15.0%) and Intermediate materials, supplies & components (-0.6%). On the other hand, Finished goods increased 0.3 per cent. [Table 3]

**Table 3 : Producer Price Index (2010=100), Local Production by Stage of Processing**

			Index	Percentage Change					
				Year-on-Year			Month-on-Month		
Stage of Processing	Code	Weights	Mar 2020	Jan 2020/ Jan 2019	Feb 2020/ Feb 2019	Mar 2020/ Mar 2019	Jan 2020/ Dec 2019	Feb 2020/ Jan 2020	Mar 2020/ Feb 2020
<b>Total</b>		<b>100.000</b>	<b>102.7</b>	<b>2.8</b>	<b>0.9</b>	<b>-1.9</b>	<b>-0.1</b>	<b>-1.3</b>	<b>-3.0</b>
Crude materials for further processing	1	16.410	89.6	10.7	0.1	-13.9	-1.0	-7.5	-15.0
Intermediate materials, supplies and components	2	56.119	107.6	1.0	1.5	0.8	0.4	0.6	-0.6
Finished goods	3	27.471	101.7	0.8	0.2	0.7	-0.3	-0.4	0.3

**Released by:**

**DATO' SRI DR. MOHD UZIR MAHIDIN**  
**CHIEF STATISTICIAN MALAYSIA**  
**DEPARTMENT OF STATISTICS, MALAYSIA**

 DrUzir\_Mahidin   Dr\_Uzir

**30<sup>th</sup> April 2020**

**Contact person:**

Mohd Yusrizal Ab Razak  
 Public Relation Officer  
 Strategic Communication and International Division  
 Department of Statistics, Malaysia  
 Tel : +603-8885 7942  
 Fax : +603-8888 9248  
 E-mail : yusrizal.razak[at]dosm.gov.my

**Contact person:**

Baharudin Mohamad  
 Public Relation Officer  
 Strategic Communication and International Division

Department of Statistics Malaysia

Tel : +603-8090 4681

Fax : +603-8888 9248

Email : [baharudin\[at\]dosm.gov.my](mailto:baharudin[at]dosm.gov.my)

**Copyright ©2025 Department of Statistics Malaysia Official Portal. All Rights Reserved.**