



## PRODUCER PRICE INDEX MALAYSIA JUNE 2018



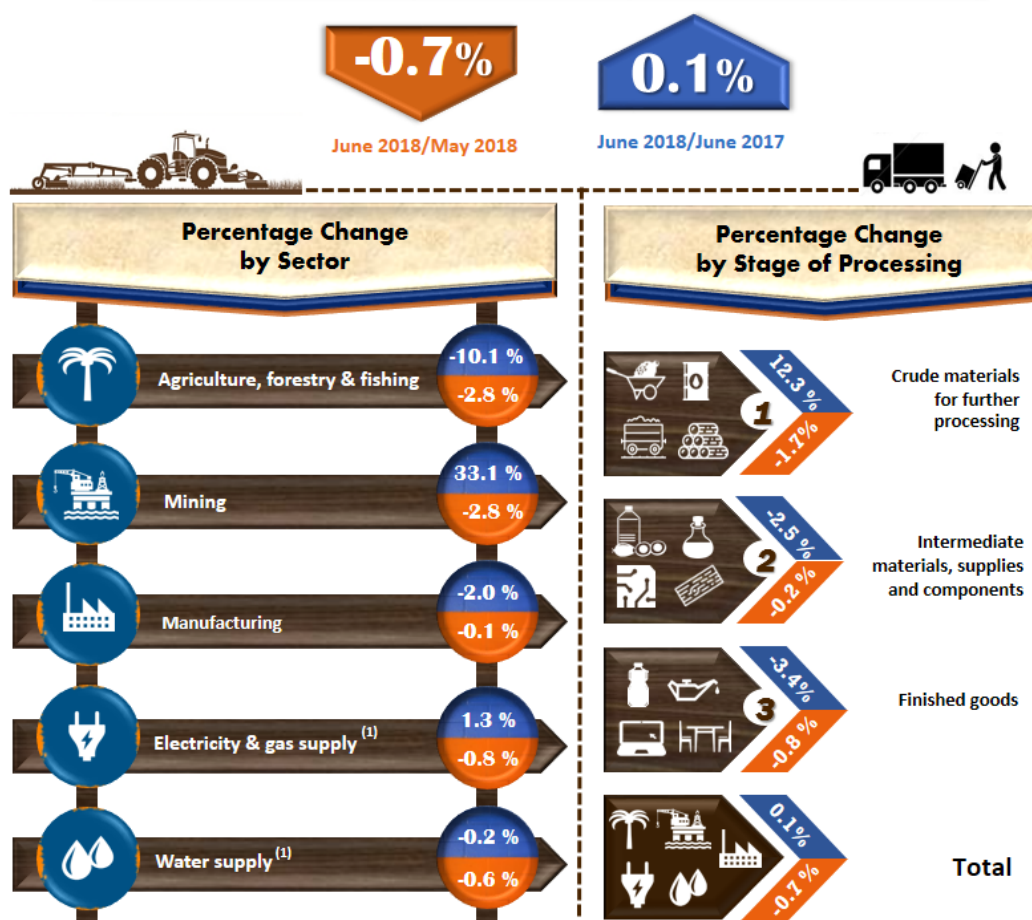
Department of Statistics, Malaysia  
<https://www.dosm.gov.my>



@StatsMalaysia

### PPI FOR LOCAL PRODUCTION, JUNE 2018

PPI for Local Production **increased 0.1 %** in **June 2018**  
 compared to June 2017



Note: <sup>(1)</sup> The price used in the calculation of the index refers to the net transaction prices for sales of output received by producers

Source: Producer Price Index Local Production (2010=100), June 2018

## Producer Price Index (2010=100) by Sector (MSIC 2008)

The Producer Price Index (PPI) for local production rose 0.1 per cent on a year-on-year basis in June 2018 as compared to a decrease of 0.4 per cent in May 2018. Among the sectors which increased during this period were Mining (+33.1%) and Electricity & gas supply (+1.3%). Meanwhile, the index that registered decreases were Agriculture, forestry & fishing (-10.1%), Manufacturing (-2.0%) and Water supply (-0.2%) sectors.

On a monthly basis, PPI for local production fell 0.7 per cent in June 2018. This was due to the decreases in Agriculture, forestry & fishing and Mining (-2.8%) respectively, Electricity & gas supply (-0.8%), Water supply (-0.6%) and Manufacturing (-0.1%).

**Table I: Producer Price Index (2010=100) Local Production by Sector (MSIC 2008), Malaysia**

Sector	Code	Weights	Index	Percentage Change Month-on-Month			Percentage Change Year-on-Year		
			June 2018	Apr. 2018/ Mar. 2018	May 2018/ Apr. 2018	June 2018/ May 2018	Apr. 2018/ Apr. 2017	May 2018/ May 2017	June 2018/ June 2017
Total		100.000	106.4	▲ 0.5	▲ 0.3	▼ -0.7	▼ -0.8	▼ -0.4	▲ 0.1
Agriculture, forestry & fishing	A	6.730	99.0	▼ -1.6	▼ -0.6	▼ -2.8	▼ -6.8	▼ -9.6	▼ -10.1
Mining	B	7.927	107.4	▲ 8.5	▲ 4.5	▼ -2.8	▲ 15.9	▲ 29.8	▲ 33.1
Manufacturing	C	81.571	106.6	▼ -0.2	▼ -0.2	▼ -0.1	▼ -2.0	▼ -2.5	▼ -2.0
Electricity & gas supply	D	3.442	115.7	▼ -0.1	▲ 0.3	▼ -0.8	▲ 1.5	▲ 2.1	▲ 1.3
Water supply	E	0.330	113.9	▲ 1.1	▼ -0.5	▼ -0.6	▲ 1.1	▲ 0.1	▼ -0.2

## PRODUCER PRICE INDEX BY STAGE OF PROCESSING

The PPI for local production by stage of processing (SOP) declined by 0.7 per cent in June 2018. This was due to the negative changes in the index for Crude materials for further processing (-1.7%), Finished goods (-0.8%) and Intermediate materials, supplies & components (-0.2%).

As compared with the same month a year ago, the PPI for local production by SOP for June 2018 rose 0.1 per cent. The increases were attributed by Crude materials for further processing (+12.3%). Meanwhile, the index for Finished goods slipped 3.4 per cent and Intermediate materials, supplies & components decreased 2.5 per cent.

**TABLE II: PRODUCER PRICE INDEX (2010=100), LOCAL PRODUCTION BY STAGE OF PROCESSING**

Stage of Processing	Code	Weights	Index	Percentage Change Month-on-Month			Percentage Change Year-on-Year		
			June 2018	Apr. 2018/ Mar. 2018	May 2018/ Apr. 2018	June 2018/ May 2018	Apr. 2018/ Apr. 2017	May 2018/ May 2017	June 2018/ June 2017
Total		100.000	106.4	▲ 0.5	▲ 0.3	▼ -0.7	▼ -0.8	▼ -0.4	▲ 0.1
Crude materials for further processing	1	16.410	112.3	▲ 2.5	▲ 3.8	▼ -1.7	▲ 3.7	▲ 9.5	▲ 12.3
Intermediate materials, supplies and components	2	56.119	107.3	▲ 0.2	▼ -0.7	▼ -0.2	▼ -1.6	▼ -2.7	▼ -2.5
Finished goods	3	27.471	100.2	▼ -0.5	▼ -0.1	▼ -0.8	▼ -2.6	▼ -2.7	▼ -3.4

### Released By:

**DATO' SRI DR. MOHD UZIR MAHIDIN**  
**CHIEF STATISTICIAN MALAYSIA**  
**DEPARTMENT OF STATISTICS, MALAYSIA**

 DrUzir\_Mahidin   Dr\_Uzir

**31 July 2018**

### Contact person:

Ho Mei Kei  
Public Relation Officer  
Strategic Communication and International Division  
Department of Statistics, Malaysia  
Tel : +603-8885 7942  
Fax : +603-8888 9248  
Email : mkho[at]dosm.gov.my

### Contact person:

Baharudin Mohamad

Public Relation Officer  
Strategic Communication and International Division  
Department of Statistics Malaysia  
Tel : +603-8090 4681  
Fax : +603-8888 9248  
Email : baharudin[at]dosm.gov.my

**Copyright ©2025 Department of Statistics Malaysia Official Portal. All Rights Reserved.**