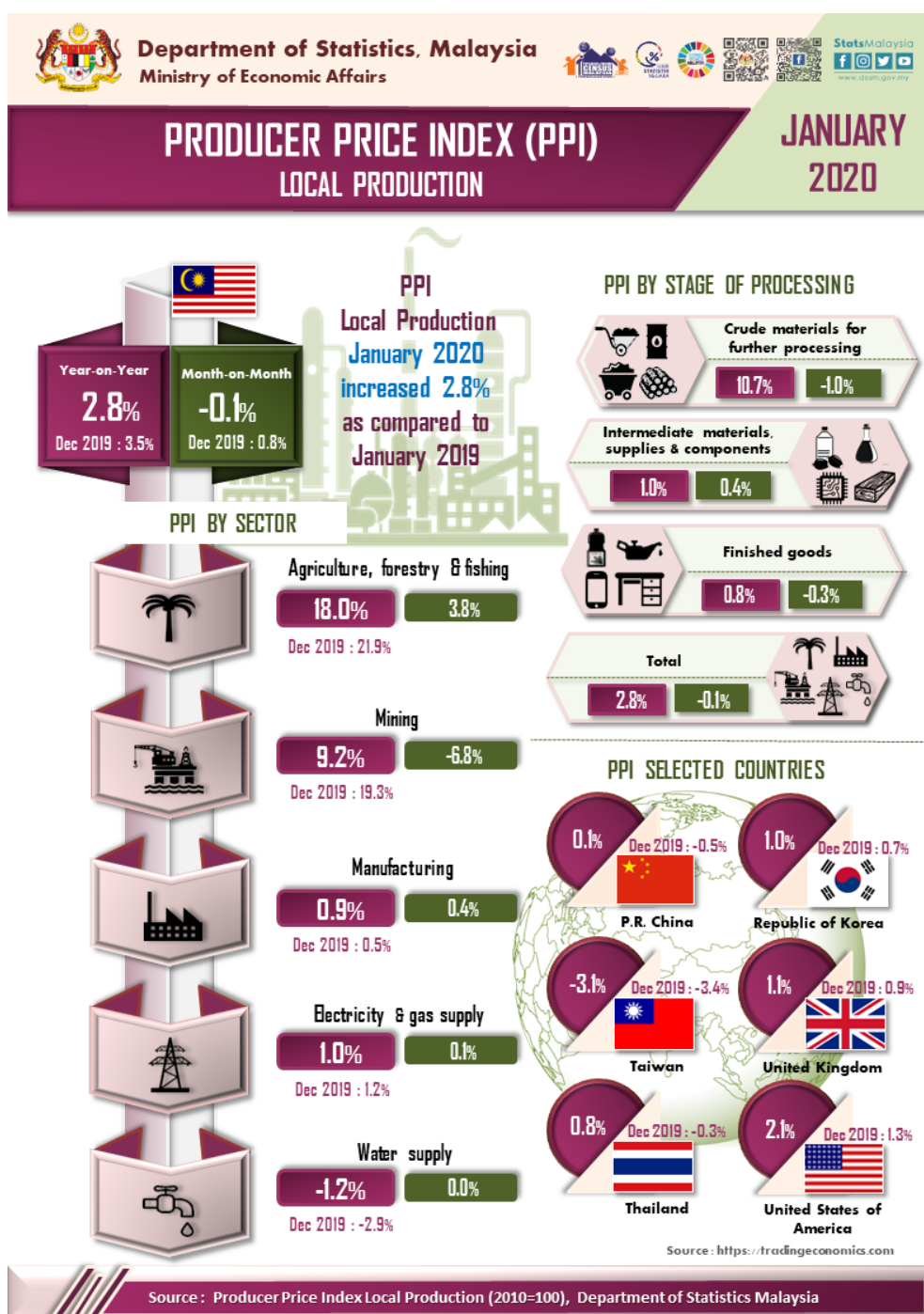


## PRODUCER PRICE INDEX MALAYSIA JANUARY 2020



### PRODUCER PRICE INDEX (2010=100) BY SECTOR (MSIC 2008)

The Producer Price Index (PPI) local production rose 2.8 per cent in January 2020 to 107.3 as against 104.4 in the same month of the preceding year. The increase in the overall index was driven by the index of Agriculture, forestry & fishing (18.0%), Mining (9.2%), Electricity & gas supply (1.0%) and Manufacturing (0.9%). In contrast, the index of Water supply recorded a decline of 1.2 per cent.

On a monthly basis, the PPI local production registered a marginal decline of 0.1 per cent in January 2020.

The decrease was attributed by the decline in the index of Mining with 6.8 per cent. Conversely, the sectors which increased during this month were Agriculture, forestry & fishing (3.8%), Manufacturing (0.4%) and Electricity & gas supply (0.1%). Meanwhile, the index for Water supply was unchanged. [Table 1]

**Table 1 : Producer Price Index (2010=100) Local Production by Sector (MSIC 2008), Malaysia**

			Index	Percentage Change					
				Year-on-Year		Month-on-Month			
Sector	Code	Weights	Jan 2020	Nov 2019/ Nov 2018	Dec 2019/ Dec 2018	Jan 2020/ Jan 2019	Nov 2019/ Oct 2019	Dec 2019/ Nov 2019	Jan 2020/ Dec 2019
<b>Total</b>		<b>100.000</b>	<b>107.3</b>	<b>1.2</b>	<b>3.5</b>	<b>2.8</b>	<b>1.3</b>	<b>0.8</b>	<b>-0.1</b>
Agriculture, forestry & fishing	A	6.730	111.7	19.9	21.9	18.0	10.5	2.6	3.8
Mining	B	7.927	104.1	6.4	19.3	9.2	8.9	2.1	-6.8
Manufacturing	C	81.571	106.9	-0.7	0.5	0.9	-0.2	0.6	0.4
Electricity & gas supply	D	3.442	117.8	0.6	1.2	1.0	-0.3	0.7	0.1
Water supply	E	0.330	111.7	-2.3	-2.9	-1.2	0.1	0.0	0.0

## PRODUCER PRICE INDEX BY STAGE OF PROCESSING

As compared with the same month a year ago, the PPI for local production by stage of processing (SOP) for January 2020 increased 2.8 per cent. The increase were for all stages of processing that is Crude materials for further processing (10.7%), Intermediate materials, supplies & components (1.0%) and Finished goods (0.8%).

As compared to the previous month, the PPI local production by SOP in January 2020 fell 0.1 per cent. The decline was attributed by the negative changes of index for Crude materials for further processing (-1.0%) and Finished goods (-0.3%). On the other hand, the index of Intermediate materials, supplies & components moved up 0.4 per cent. [Table 2]

**Table 2 : Producer Price Index (2010=100), Local Production by Stage of Processing**

Stage of Processing	Code	Weights	Index						
			Jan 2020	Year-on-Year		Percentage Change			
				Nov 2019/ Nov 2018	Dec 2019/ Dec 2018	Jan 2020/ Jan 2019	Nov 2019/ Oct 2019	Dec 2019/ Nov 2019	Jan 2020/ Dec 2019
<b>Total</b>		<b>100.000</b>	<b>107.3</b>	<b>1.2</b>	<b>3.5</b>	<b>2.8</b>	<b>1.3</b>	<b>0.8</b>	<b>-0.1</b>
Crude materials for further processing	1	16.410	113.9	5.9	16.0	10.7	6.5	3.5	-1.0
Intermediate materials, supplies and components	2	56.119	107.6	-0.4	0.4	1.0	0.4	0.0	0.4
Finished goods	3	27.471	101.8	1.4	1.2	0.8	-0.2	0.5	-0.3

### Released by:

**DATO' SRI DR. MOHD UZIR MAHIDIN**  
**CHIEF STATISTICIAN MALAYSIA**  
**DEPARTMENT OF STATISTICS, MALAYSIA**

 DrUzir\_Mahidin   Dr\_Uzir

**27<sup>th</sup> February 2020**

### Contact person:

Mohd Yusrizal Ab Razak  
Public Relation Officer  
Strategic Communication and International Division  
Department of Statistics, Malaysia  
Tel : +603-8885 7942  
Fax : +603-8888 9248  
Email : yusrizal.razak[at]dosm.gov.my

### Contact person:

Baharudin Mohamad

Public Relation Officer  
Strategic Communication and International Division  
Department of Statistics Malaysia  
Tel : +603-8090 4681  
Fax : +603-8888 9248  
Email : baharudin[at]dosm.gov.my

**Copyright ©2025 Department of Statistics Malaysia Official Portal. All Rights Reserved.**