



PRODUCER PRICE INDEX MALAYSIA FEBRUARY 2018



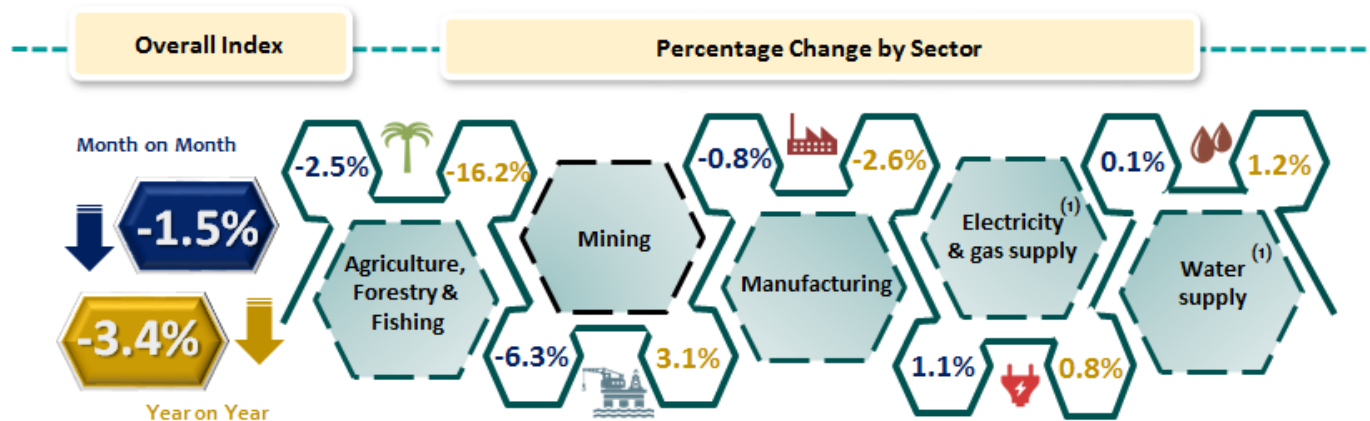
Department of Statistics Malaysia
<https://www.dosm.gov.my>



@StatsMalaysia

PPI FOR LOCAL PRODUCTION , FEBRUARY 2018

PPI for Local Production **decreased -3.4%** in February 2018 compared to February 2017



Note: ⁽¹⁾ The price used in the calculation of the index refers to the net transaction prices for sales of output received by producers

Source: Producer Price Index Local Production (2010=100), February 2018

Producer Price Index (2010=100) by Sector (MSIC 2008)

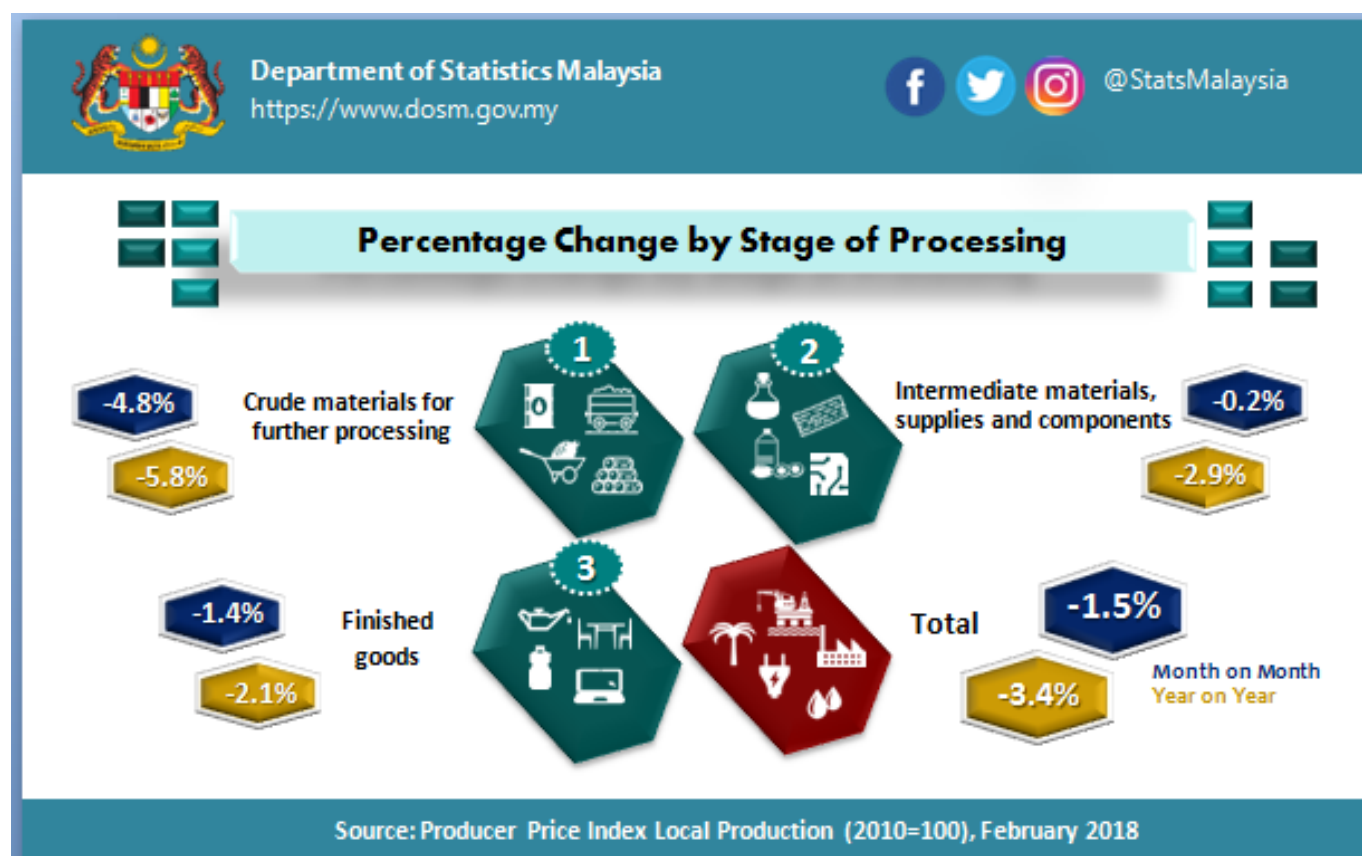
The Producer Price Index (PPI) for local production decreased 3.4 per cent on a year-on-year basis in February 2018 compared to a decrease of 1.2 per cent in January 2018. Among the sectors which decreased during this period were Agriculture, forestry & fishing (-16.2%), and Manufacturing (-2.6%). Meanwhile, the index registered increases for mining (+3.1%), Water supply (+1.2%) and Electricity & gas supply (+0.8%) sectors.

On a monthly basis, PPI for local production decreased by 1.5 per cent in February 2018. This was due to decrease in Mining (-6.3%), Agriculture, forestry & fishing (-2.5%) and Manufacturing (-0.8%) sectors. Meanwhile, the index for the Electricity & gas supply and water supply sectors increased by 1.1 per cent and 0.1 per cent respectively. [Table I].

Table I: Producer Price Index (2010=100) Local Production by Sector (MSIC 2008), Malaysia

| Sector | Code | Weights | Index | Percentage Change Month-on-Month | | | Percentage Change Year-on-Year | | |
|---------------------------------|------|---------|-----------|----------------------------------|-------------------------|-------------------------|--------------------------------|-------------------------|-------------------------|
| | | | Feb. 2018 | Dec. 2017/ Nov. 2017 | Jan. 2018/ Dec. 2017 | Feb. 2018/ Jan. 2018 | Dec. 2017/ Dec. 2016 | Jan. 2018/ Jan. 2017 | Feb. 2018/ Feb. 2017 |
| Total | | 100.000 | 106.7 | ▼ -0.5 | ▲ 0.5 | ▼ -1.5 | ▲ 0.3 | ▼ -1.2 | ▼ -3.4 |
| Agriculture, forestry & fishing | A | 6.730 | 107.3 | ▼ -5.3 | ▲ 2.7 | ▼ -2.5 | ▼ -13.8 | ▼ -13.8 | ▼ -16.2 |
| Mining | B | 7.927 | 97.5 | ▼ -0.6 | ▲ 6.3 | ▼ -6.3 | ▲ 8.9 | ▲ 8.9 | ▲ 3.1 |
| Manufacturing | C | 81.571 | 107.5 | ▲ 0.1 | ▼ -0.4 | ▼ -0.8 | ▲ 1.1 | ▼ -0.7 | ▼ -2.6 |
| Electricity & gas supply | D | 3.442 | 115.4 | ▼ -0.3 | ▼ -0.3 | ▲ 1.1 | ▼ -0.2 | ▼ -0.4 | ▲ 0.8 |
| Water supply | E | 0.330 | 114.2 | ▼ -0.3 | ⚡ 0.0 | ▲ 0.1 | ▼ -0.4 | ▲ 1.0 | ▲ 1.2 |

PRODUCER PRICE INDEX BY STAGE OF PROCESSING



The PPI for local production by stage of processing (SOP) decreased by 1.5 per cent in February 2018. This was due to the negative changes in the index for Crude materials for further processing (-4.8%), Finished goods (-1.4%), and Intermediate materials, supplies and components (-0.2%).

As compared with the same month a year ago, the PPI for local production by SOP for February 2018 decreased 3.4 per cent. The decreased was fuelled by the index for Crude materials for further processing (-5.8%), Intermediate materials, supplies and components (-2.9%) and Finished goods (-2.1%). [Table II].

TABLE II: PRODUCER PRICE INDEX (2010=100), LOCAL PRODUCTION BY STAGE OF PROCESSING

| Stage of Processing | Code | Weights | Index | Percentage Change Month-on-Month | | | Percentage Change Year-on-Year | | |
|---|------|---------|-----------|----------------------------------|-------------------------|-------------------------|--------------------------------|-------------------------|-------------------------|
| | | | Feb. 2018 | Dec. 2017/ Nov. 2017 | Jan. 2018/ Dec. 2017 | Feb. 2018/ Jan. 2018 | Dec. 2017/ Dec. 2016 | Jan. 2018/ Jan. 2017 | Feb. 2018/ Feb. 2017 |
| Total | | 100.000 | 110.4 | ▼ -0.5 | ▲ 0.5 | ▼ -1.5 | ▲ 0.3 | ▼ -1.2 | ▼ -3.4 |
| Crude materials for further processing | 1 | 16.410 | 115.1 | ▼ -2.4 | ▲ 3.5 | ▼ -4.8 | ▼ -1.3 | ▼ -1.0 | ▼ -5.8 |
| Intermediate materials, supplies and components | 2 | 56.119 | 112.0 | ▲ 0.1 | ▼ -0.4 | ▼ -0.2 | ▲ 0.9 | ▼ -1.5 | ▼ -2.9 |
| Finished goods | 3 | 27.471 | 103.6 | ⚡ 0.0 | ▼ -0.1 | ▼ -1.4 | ▲ 0.1 | ▼ -0.4 | ▼ -2.1 |

Released By:

DATO' SRI DR. MOHD UZIR MAHIDIN
CHIEF STATISTICIAN MALAYSIA
DEPARTMENT OF STATISTICS, MALAYSIA

 [DrUzir_Mahidin](#)   [Dr_Uzir](#)

30 March 2018

Contact person:

Ho Mei Kei
Public Relation Officer
Strategic Communication and International Division
Department of Statistics, Malaysia
Tel : +603-8885 7942
Fax : +603-8888 9248
Email : mkho[at]dosm.gov.my

Contact person:

Baharudin Mohamad
Public Relation Officer
Strategic Communication and International Division
Department of Statistics Malaysia
Tel : +603-8090 4681
Fax : +603-8888 9248
Email : baharudin[at]dosm.gov.my

Copyright ©2025 Department of Statistics Malaysia Official Portal. All Rights Reserved.