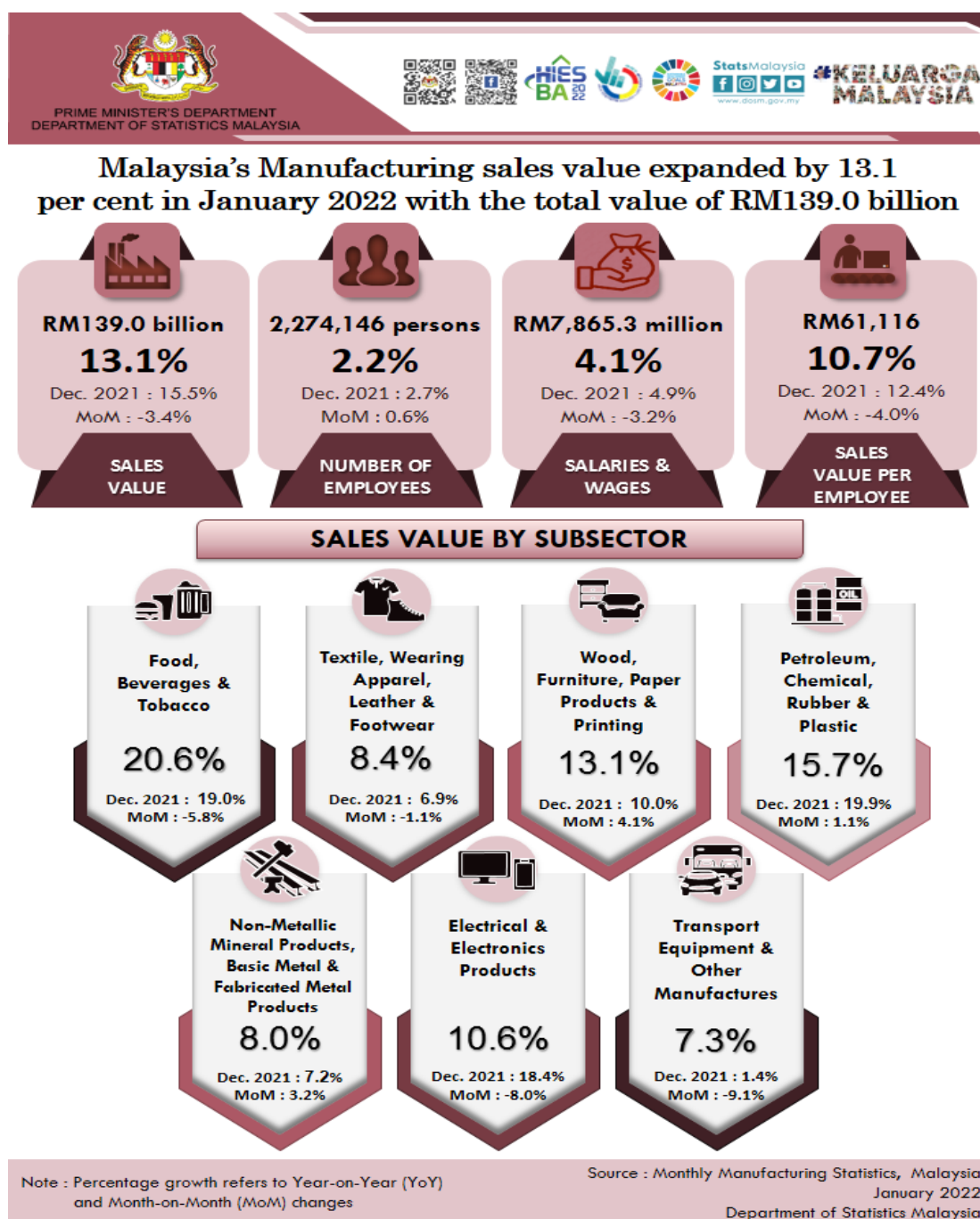




MONTHLY MANUFACTURING STATISTICS MALAYSIA, JANUARY 2022



HIGHLIGHTS

Malaysia's Manufacturing sales value expanded by 13.1 per cent in January 2022 with the total value of RM139.0 billion

Malaysia's Manufacturing sales in January 2022 stood at **RM139.0 billion**, grew **13.1 per cent** as compared to previous year. The rise in sales value in January 2022 was driven by the increase in Food, Beverages & Tobacco Products (**20.6%**), Petroleum, Chemical, Rubber & Plastic Products (**15.7%**) and Electrical & Electronics Products (**10.6%**). Meanwhile, on month-on-month basis, the sales value decreased **3.4 per cent**.

Total employees engaged in the Manufacturing sector in January 2022 was **2,274,146 persons**, an increase of **2.2 per cent** as compared to 2,225,697 persons in January 2021. Salaries & wages paid amounted to **RM7,865.3 million**, increased by **4.1 per cent** or **RM307.3 million** in January 2022 as against the same month of the preceding year.

The sales value per employee rose by **10.7 per cent** to record **RM61,116** as compared with the same month in 2021. Meanwhile, the average salaries & wages per employee was **RM3,459** in January 2022.

The full publication of the Monthly Manufacturing Statistics, January 2022 can be downloaded through **eStatistik** portal.

Released By:

DATO' SRI DR. MOHD UZIR MAHIDIN
CHIEF STATISTICIAN MALAYSIA
DEPARTMENT OF STATISTICS MALAYSIA

 [DrUzir_Mahidin](#)   [dr_uzir](#)

11 MARCH 2022

Contact person:

Mohd Yusrizal Ab Razak
Public Relation Officer
Strategic Communication and International Division
Department of Statistics, Malaysia
Tel : +603-8885 7942
Fax : +603-8888 9248
E-mail : yusrizal.razak[at]dosm.gov.my

Contact person:

Baharudin Mohamad
Public Relation Officer
Strategic Communication and International Division
Department of Statistics Malaysia
Tel : +603-8090 4681
Fax : +603-8888 9248
Email : baharudin[at]dosm.gov.my

Copyright ©2025 Department of Statistics Malaysia Official Portal. All Rights Reserved.