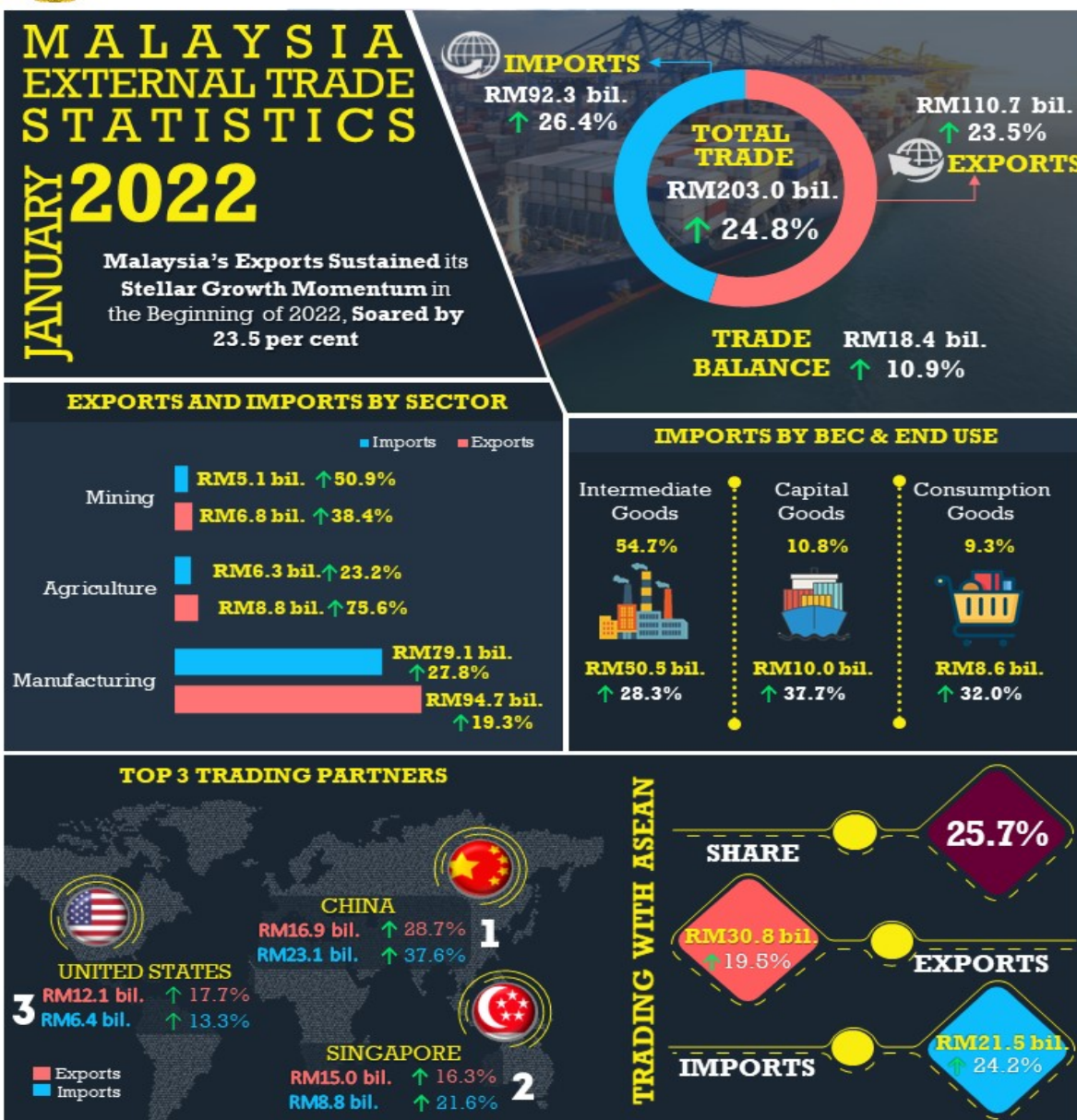




## MALAYSIA EXTERNAL TRADE STATISTICS BULLETIN, JANUARY 2022



PRIME MINISTER'S DEPARTMENT  
DEPARTMENT OF STATISTICS MALAYSIA



Note: 1. ↑ ↓ All changes are based on year-on-year (y-o-y) comparison.  
2. The January 2022 data is preliminary and subject to revision in later issues.  
3. This report can be accessed through the web portal of the Department of Statistics, Malaysia (<http://www.dosm.gov.my>) under section: Latest Release

Source: Monthly External Trade Statistics, January 2022

### KEY FACTS

Malaysia's total trade performance continued its growth momentum in January 2022, expanded by 24.8 per cent, reaching RM203.0 billion as compared to RM162.6 billion in the previous year. Exports grew by 23.5 per cent to RM110.7 billion in January 2022, the 17th consecutive month of year-on-year (y-o-y) expansion since September 2020. This was the fifth consecutive months of export value exceeded RM100 billion. Imports totalled RM92.3 billion, continued to register a growth of 26.4 per cent from the preceding year. Trade value continued to record a surplus, with a value of RM18.4 billion, an increase of 10.9 per cent from the previous year.

In comparison to December 2021, exports, imports, total trade and trade surplus decreased by 10.6 per cent, 0.6 per cent, 6.3 per cent and 40.6 per cent, respectively.

## A. PERFORMANCE OF EXPORTS

Malaysia's exports in January 2022 maintained its double-digit growth for six consecutive months, registering an increase of 23.5 per cent to RM110.7 billion compared to January 2021. The expansion was supported by both domestic exports and re-exports. Domestic exports totalled RM90.9 billion and contributed 82.1 per cent to total exports, increased by 26.1 per cent. On the same note, re-exports with a value of RM19.8 billion, grew by 13.2 per cent y-o-y. In comparison to December 2021, exports shrank by 10.6 per cent or RM13.1 billion. Analysis of the seasonally adjusted terms m-o-m, exports decreased by 7.3 per cent or RM8.6 billion to RM109.1 billion.

Chart 1: Domestic Exports, Re-Exports (RM billion) and Annual Change (%)

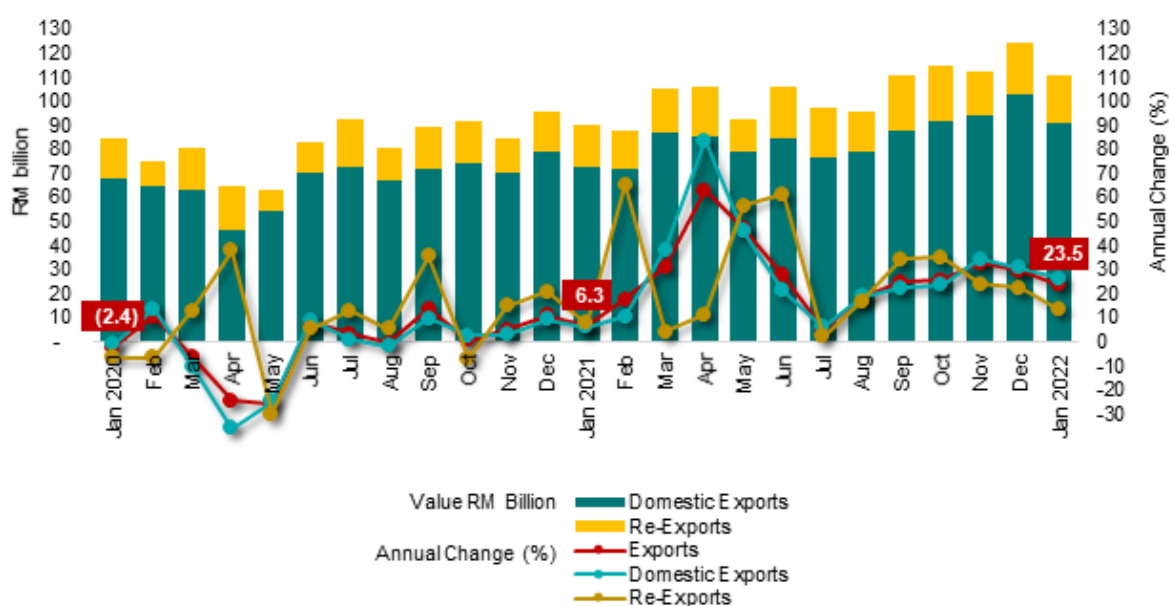
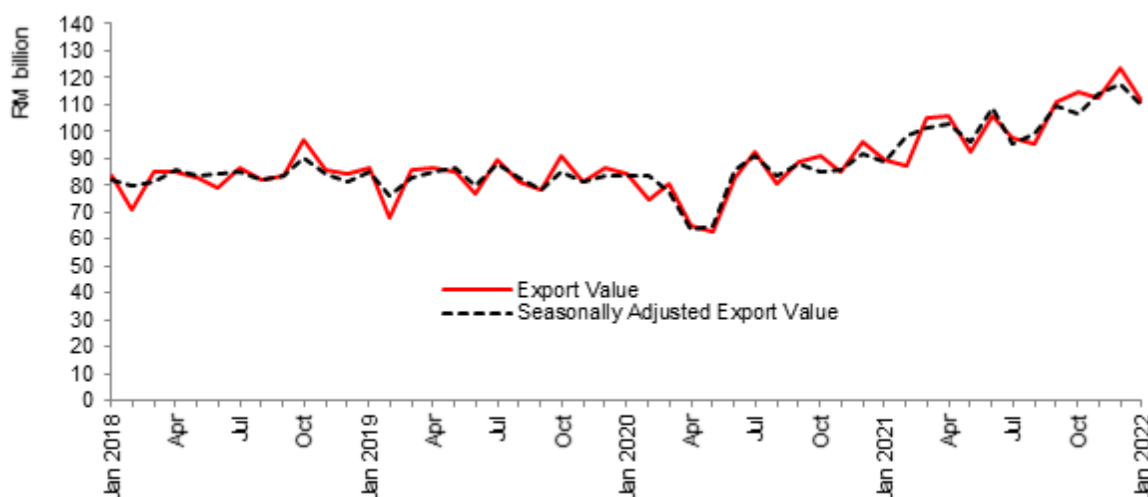


Chart 2: Actual Export Value and Seasonally Adjusted Export Value, RM billion



## B. PERFORMANCE OF IMPORTS

Malaysia's imports in January 2022, expanded by 26.4 per cent from RM73.0 billion in the preceding year to RM92.3 billion. In comparison to December 2021, imports decreased marginally 0.6 per cent or RM538.2 million. Based on seasonally adjusted terms, imports rose 1.4 per cent to RM91.3 billion.

On a y-o-y basis, imports by end use registered a positive growth with the increases in the intermediate goods, capital goods and consumption goods.

Chart 3: Imports, Value (RM billion) and Annual Change (%)

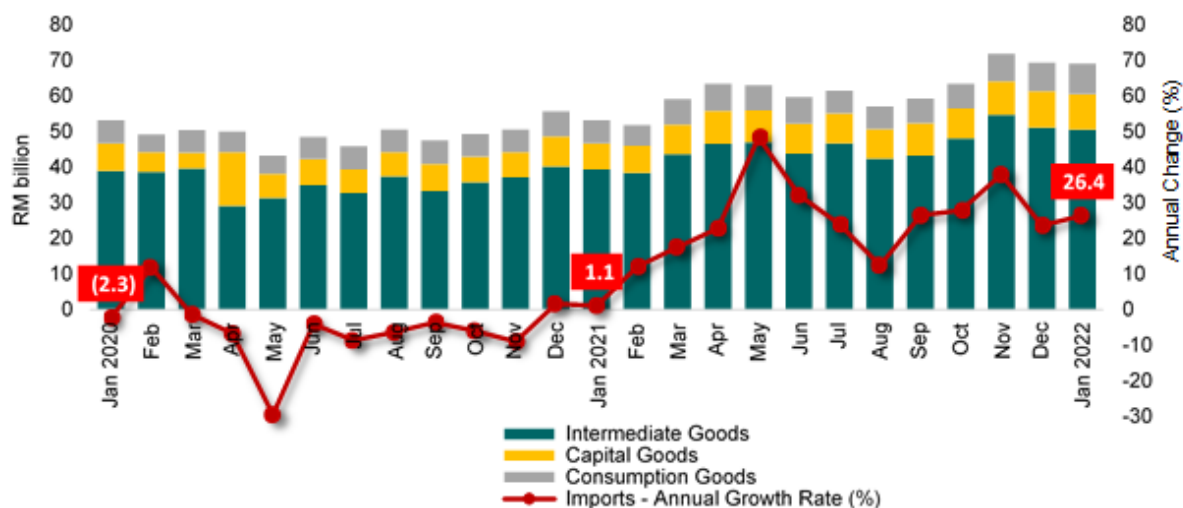
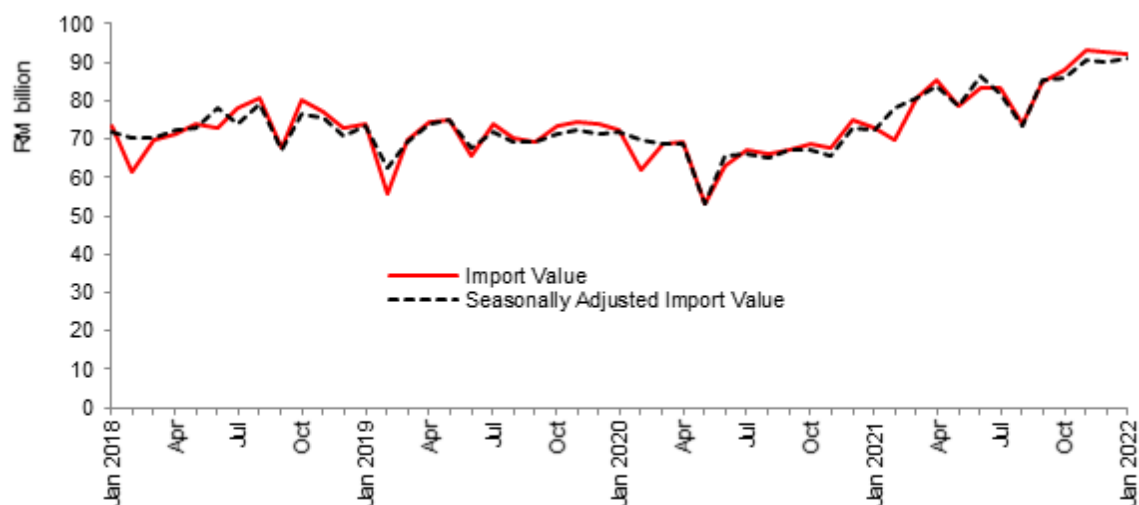


Chart 4: Actual Import Value and Seasonally Adjusted Import Value, RM billion



Download full article [here](#)

Download: Appendix [here](#)

### #Notes:

1. The January 2022 data is preliminary and subject to revision in later issues.
2. This report can be accessed through the web portal of the Department of Statistics, Malaysia (<https://www.dosm.gov.my>) under section: Latest Release.



**Released By:**

**DATO' SRI DR. MOHD UZIR MAHIDIN**  
**CHIEF STATISTICIAN MALAYSIA**  
**DEPARTMENT OF STATISTICS, MALAYSIA**



**DrUzir\_Mahidin**



**Dr\_Uzir**

**#myHariBulan# #myBulan# #myTahun#**

**Contact person:**

Mohd Yusrizal Ab Razak  
Public Relation Officer  
Strategic Communication and International Division  
Department of Statistics, Malaysia  
Tel : +603-8885 7942  
Fax : +603-8888 9248  
E-mail : yusrizal.razak[at]dosm.gov.my

**Contact person:**

Baharudin Mohamad  
Public Relation Officer  
Strategic Communication and International Division  
Department of Statistics Malaysia  
Tel : +603-8090 4681  
Fax : +603-8888 9248  
Email : baharudin[at]dosm.gov.my

**Copyright ©2025 Department of Statistics Malaysia Official Portal. All Rights Reserved.**