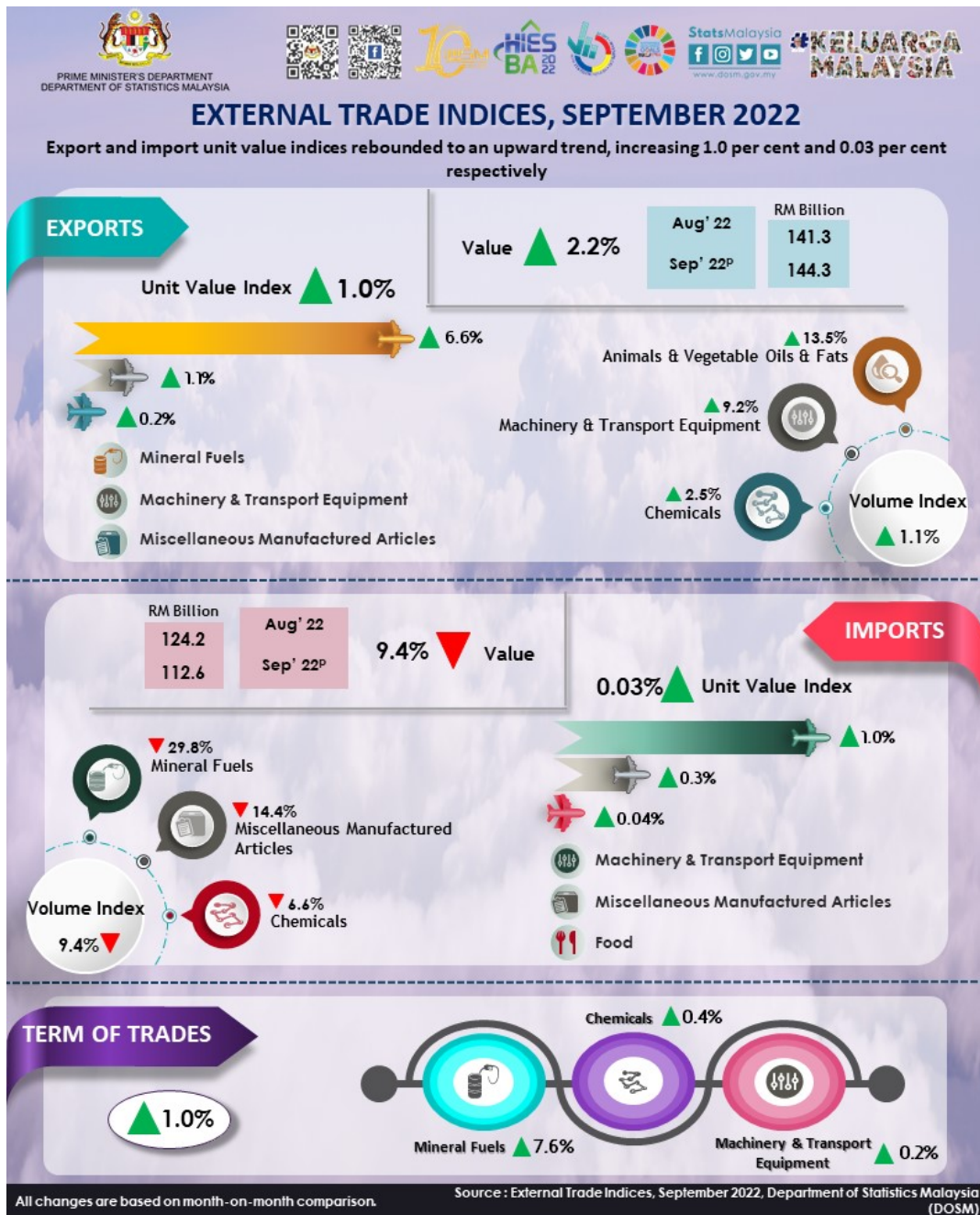




## MALAYSIA EXTERNAL TRADE INDICES, SEPTEMBER 2022



## **Exports**

The **export unit value index** grew 1.0 per cent in September 2022 as compared with the previous month, supported by the increases in the index of mineral fuels (+6.6%), machinery & transport equipment (+1.1%) and miscellaneous manufactured articles (+0.2%). **Export volume index** also increased 1.1 per cent, contributed by the rises in the index of animal & vegetables oils & fats (+13.5%), machinery & transport equipment (+9.2%) and chemicals (+2.5%). The seasonally adjusted **export volume index** fell 4.9 per cent in September 2022, from 188.7 points to 179.5 points.

On annual comparison, both **export unit value** and **volume indices** continued to grow 17.8 per cent and 10.5 per cent, respectively.

## **Imports**

**Import unit value index** showed a marginal increment of 0.03 per cent in September 2022 as compared with the previous month, attributed to the rises in the index of machinery & transport equipment (+1.0%), miscellaneous manufactured articles (+0.3%) and food (+0.04%). On the other hand, the **import volume index** decreased 9.4 per cent in September 2022 as compared to the previous month, contributed by the falls in the index of mineral fuels (-29.8%), miscellaneous manufactured articles (-14.4%) and chemicals (-6.6%). The seasonally adjusted **import volume index** also fell by 8.2 per cent from 213.4 points to 195.8 points.

On a year-on-year basis, both the **import unit value** and **volume indices** rose 10.3 per cent and 20.6 per cent, respectively.

## **Terms of trade**

Malaysia's **terms of trade** increased by 1.0 per cent month-on-month to 113.0 points in September 2022, contributed by the rises in the index of mineral fuels (+7.6%), chemicals (+0.4%) and machinery & transport equipment (+0.2%). Malaysia's **terms of trade** maintained a positive growth of 6.8 per cent year-on-year from 105.9 points in September of previous year.

The full publication of the External Trade Indices, September 2022 can be downloaded through [eStatistik](#) Portal.

For more details, please refer to the Department's portal: [www.dosm.gov.my](http://www.dosm.gov.my)

\*Notes:

The September 2022 data is provisional and subject to revision in later issues.

**Released by:**

**DEPARTMENT OF STATISTICS MALAYSIA**  
**4 November 2022**

**Contact person:**

**Baharudin Mohamad**  
Public Relation Officer

Strategic Communication and International Division  
Department of Statistics, Malaysia  
**Tel :** +603-8885 7942  
**Fax :** +603-8888 9248  
**Email:** baharudin[at]dosm.gov.my

**Contact person:**

Baharudin Mohamad  
Public Relation Officer  
Strategic Communication and International Division  
Department of Statistics Malaysia  
Tel : +603-8090 4681  
Fax : +603-8888 9248  
Email : baharudin[at]dosm.gov.my

**Copyright ©2026 Department of Statistics Malaysia Official Portal. All Rights Reserved.**