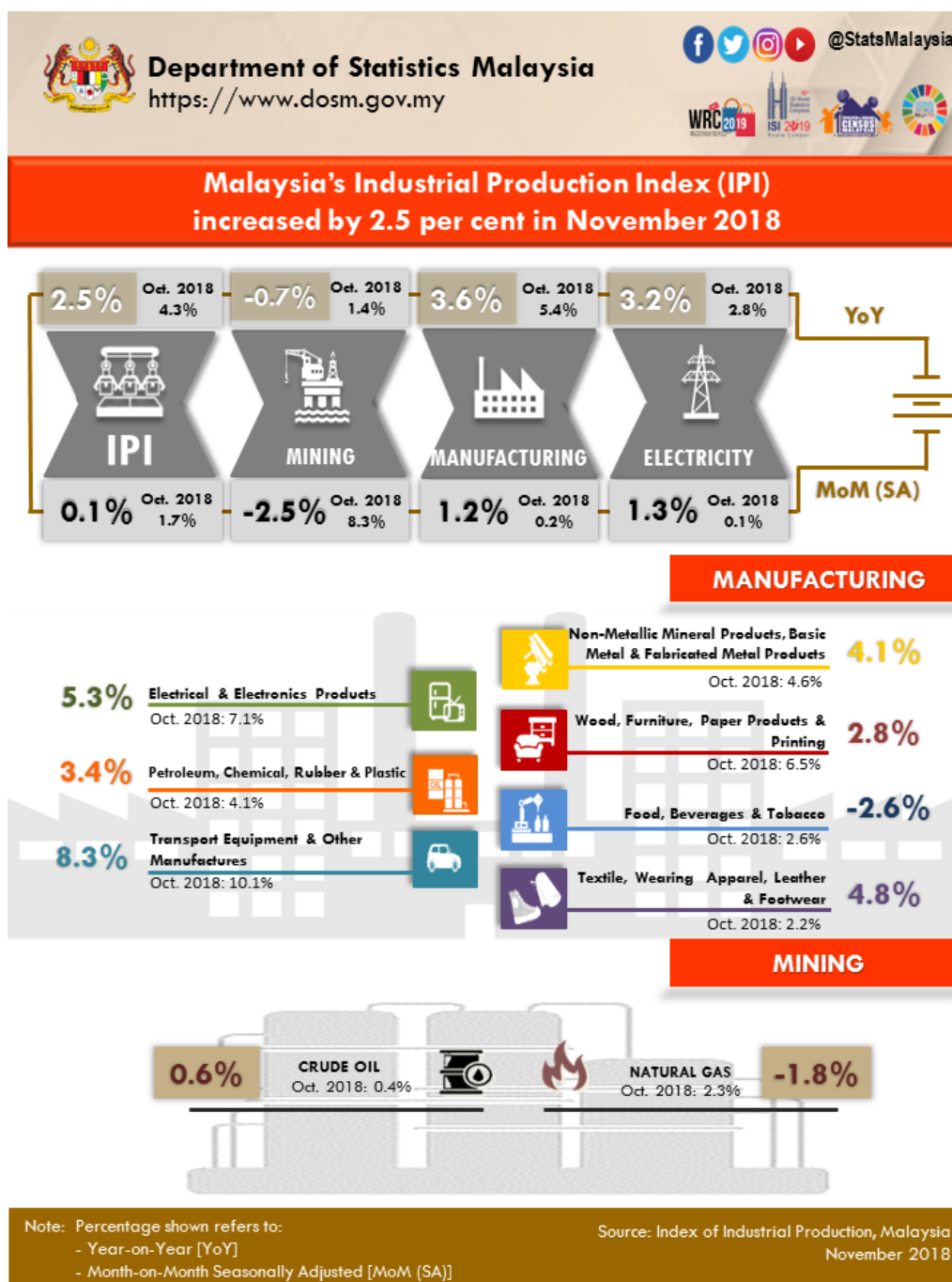




INDEX OF INDUSTRIAL PRODUCTION, MALAYSIA NOVEMBER 2018



Malaysia's Industrial Production Index (IPI) rose by 2.5 per cent in November 2018

The Industrial Production Index (IPI) rose by **2.5 per cent** in November 2018 as compared with the same month of the previous year. The growth in November 2018 was supported by the increase in Manufacturing index (**3.6%**) and Electricity index (**3.2%**). Meanwhile, the Mining index declined by **0.7 per cent**.

The Manufacturing sector output expanded by **3.6 per cent** in November 2018 after registering a growth of 5.4 per cent in October 2018. The major sub - sectors that contributed to the growth in November 2018

were: Transport Equipment and Other Manufactures Products (**8.3%**), Electrical and Electronic Equipment Products (**5.3%**) and Petroleum, Chemical, Rubber and Plastic Products (**3.4%**).

The Mining sector output recorded a decline of **0.7 per cent** in November 2018 as compared to the same period of the previous year. This was due to a decrease in Natural Gas index (**-1.8%**). Meanwhile, Crude Oil index increased marginally by **0.6 per cent**.

The Electricity sector index increased by **3.2 per cent** in November 2018 as against November 2017.

***Notes:**

Data for November 2018 is provisional. The data will be updated based on the latest available figures and subsequently published in the December 2018 publication.

Released By:

DATO' SRI DR. MOHD UZIR MAHIDIN
CHIEF STATISTICIAN MALAYSIA
DEPARTMENT OF STATISTICS, MALAYSIA

 [DrUzir_Mahidin](#)  [Dr_Uzir](#) 

#myHariBulan# #myBulan# #myTahun#

Contact person:

Ho Mei Kei
Public Relation Officer
Strategic Communication and International Division
Department of Statistics, Malaysia
Tel : +603-8885 7942
Fax : +603-8888 9248
Email : mkho[at]dosm.gov.my

Contact person:

Baharudin Mohamad
Public Relation Officer
Strategic Communication and International Division
Department of Statistics Malaysia
Tel : +603-8090 4681
Fax : +603-8888 9248
Email : baharudin[at]dosm.gov.my

Copyright ©2026 Department of Statistics Malaysia Official Portal. All Rights Reserved.