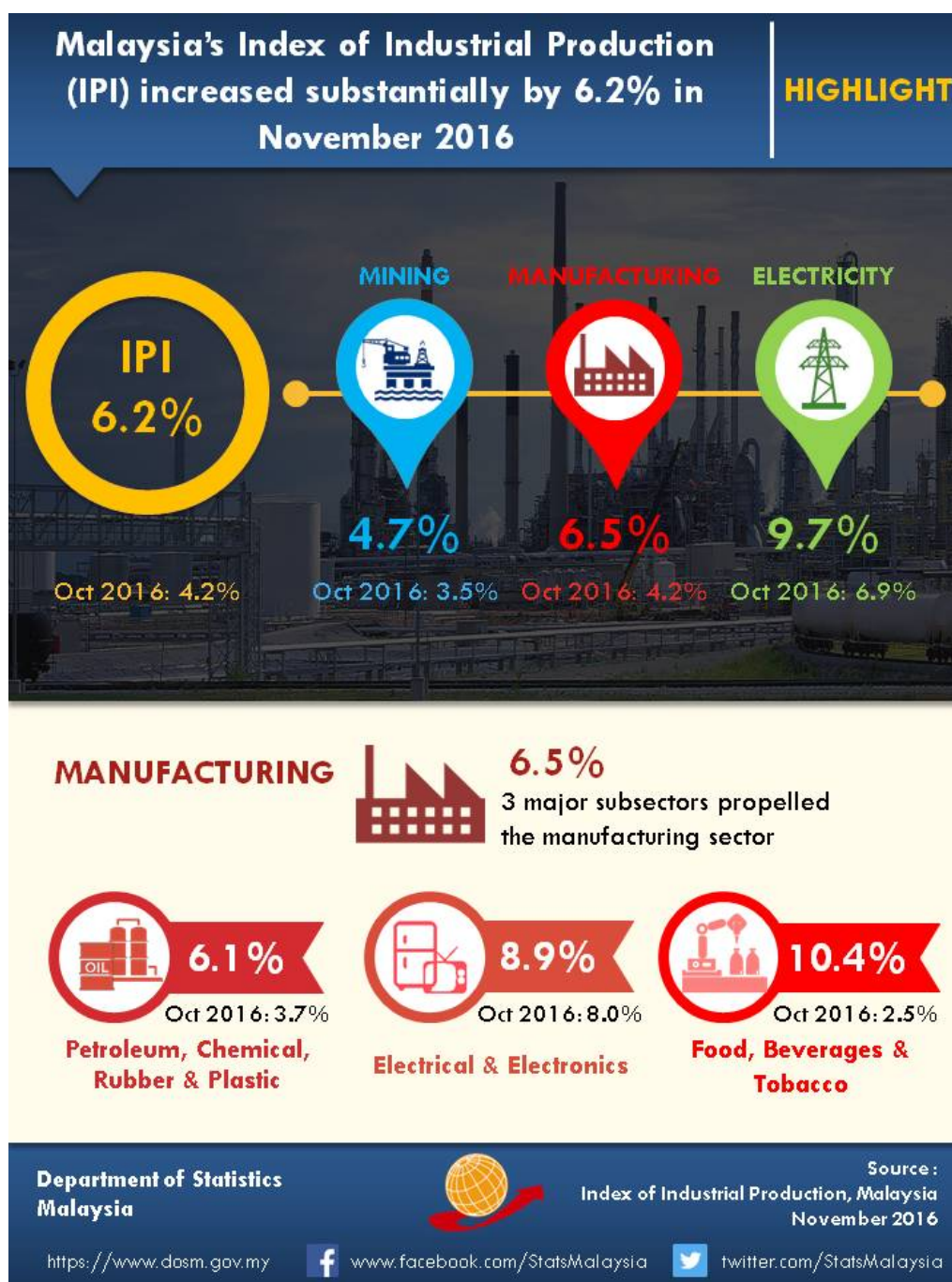




## INDEX OF INDUSTRIAL PRODUCTION, MALAYSIA NOVEMBER 2016



## **Malaysia's Index of Industrial Production (IPI) increased substantially by 6.2% in November 2016**

The Index of Industrial Production (IPI) increased substantially by **6.2%** in November 2016 as compared to the same month of the previous year. The strong growth of the IPI in November 2016 was attributed by higher indices in all sectors: Manufacturing (**6.5%**); Mining (**4.7%**) and Electricity (**9.7%**).

Manufacturing sector output grew significantly by **6.5%** in November 2016 after an increase of 4.2% in October 2016. The expansion was mainly due to higher growth in major sub-sectors namely: Petroleum, Chemical, Rubber and Plastic Products (**6.1%**); Electrical and Electronics Products (**8.9%**) and Food, Beverages and Tobacco (**10.4%**).

The Mining sector output expanding steadily by **4.7%** in November 2016 after registering an increased of 3.5% in October 2016 due to the increased in Natural Gas index by **13.2%**. However, the Crude Oil index declined by **1.9%**.

The Electricity sector output expanded by **9.7%** in November 2016 following an increase of 6.9% in October 2016.

### **\*Notes:**

Data for October 2016 is **provisional**. The data will be updated based on the latest available figures and subsequently published in the publication December 2016.

### **Released By:**

**THE OFFICE OF CHIEF STATISTICIAN MALAYSIA  
DEPARTMENT OF STATISTICS, MALAYSIA  
11 JANUARY 2017**

### **Contact person:**

Ho Mei Kei  
Public Relation Officer  
Corporate and User Services Division  
Department of Statistics, Malaysia  
**Tel** : +603-8885 7942  
**Fax** : +603-8888 9248  
**Email** : mkho[at]stats.gov.my

### **Contact person:**

Baharudin Mohamad  
Public Relation Officer  
Strategic Communication and International Division  
Department of Statistics Malaysia  
**Tel** : +603-8090 4681  
**Fax** : +603-8888 9248  
**Email** : baharudin[at]dosm.gov.my

**Copyright ©2025 Department of Statistics Malaysia Official Portal. All Rights Reserved.**