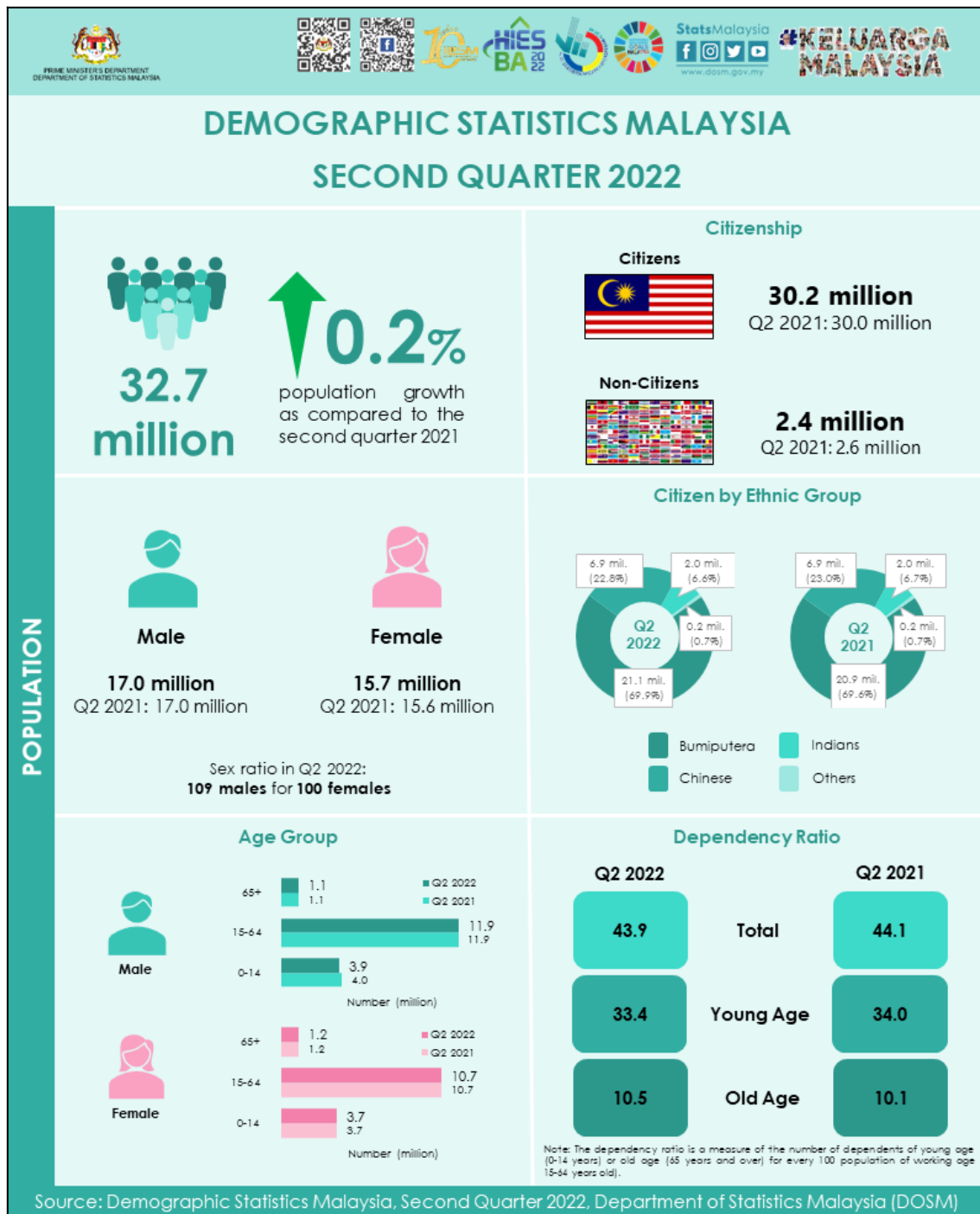




DEMOGRAPHIC STATISTICS SECOND QUARTER 2022, MALAYSIA



LIVE BIRTHS

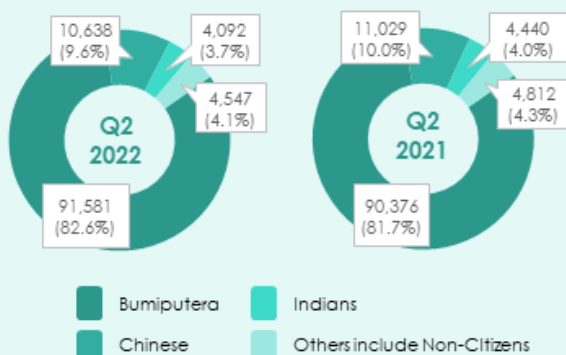


110,858
live births



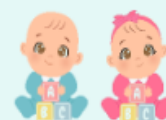
0.2%

compared to the
second quarter 2021
(110,657)



Male Babies

56,801
Q2 2021:
56,838



Female Babies

54,057
Q2 2021:
53,819

Year	Month	Change (YoY)	Number
2021 ^p	April	-1.9	37,215
	May	-7.2	37,387
	June	-7.1	36,055
	April - June	-5.4	110,657
2022 ^p	April	-0.1	37,161
	May	0.3	37,513
	June	0.4	36,184
	April - June	0.2	110,858

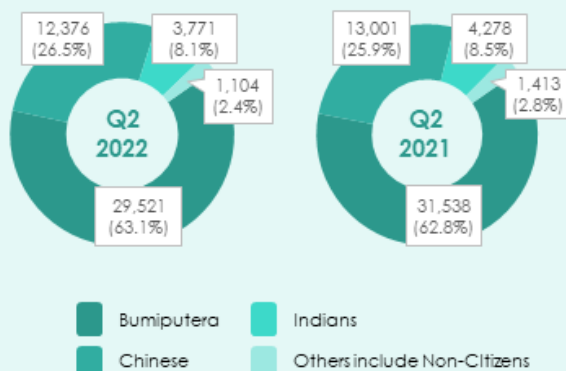
DEATHS



46,772
deaths

6.9%

compared to the
second quarter 2021
(50,230)



Male
26,476

Q2 2021: 28,610



Female
20,296

Q2 2021: 21,620

Deaths due to COVID-19

	Q2 2021	Q2 2022
Total	4,380	655
April	258	447
May	1,620	119
June	2,502	89

Source: Ministry of Health Malaysia

Year	Month	Change (YoY)	Number
2021 ^p	April	13.4	14,817
	May	29.4	17,979
	June	30.8	17,434
	April - June	24.7	50,230
2022 ^p	April	9.2	16,176
	May	-7.9	16,558
	June	-19.5	14,038
	April - June	-6.9	46,772

Source: Demographic Statistics Malaysia, Second Quarter 2022, Department of Statistics Malaysia (DOSM)

Live births increased 0.2 per cent

A total of 110,858 live births were recorded in the second quarter 2022, an increase of 0.2 per cent as compared to the second quarter 2021 (110,657 births). The first quarter of 2000 recorded the highest number of births for the same quarter in the period of 2000 to 2022.

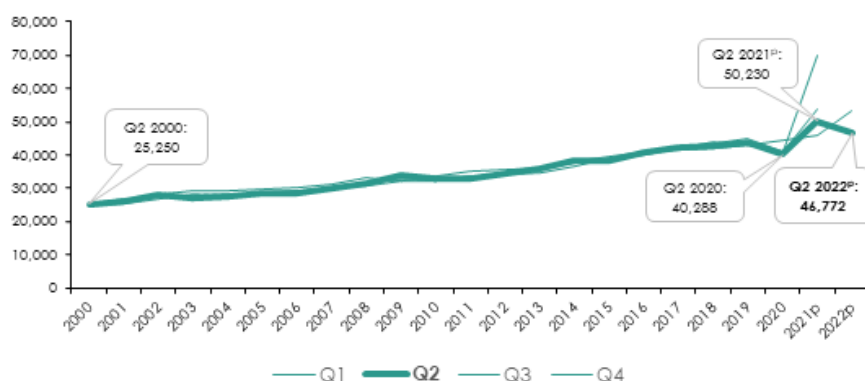
Live births by quarterly, Malaysia, 2000-2022^p (Q1, Q2, Q3, Q4)



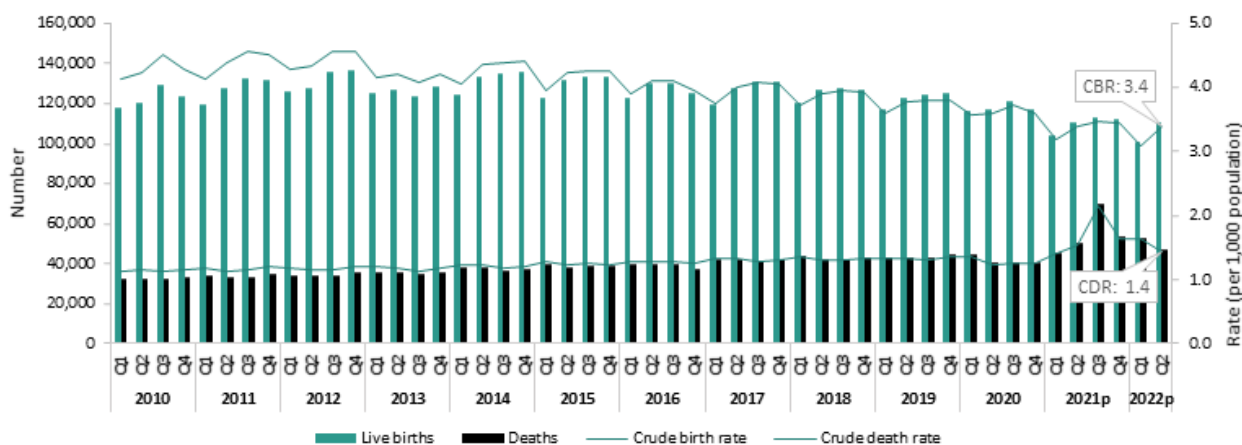
Deaths decreased 6.9 per cent

A total of 46,772 deaths were recorded for the second quarter 2022, a decrease of 6.9 per cent as compared to the second quarter 2021 (50,230 deaths). The second quarter of 2021 recorded the highest number of deaths for the same quarter in the period of 2000 to 2022.

Deaths by quarterly, Malaysia, 2000-2022^p (Q1, Q2, Q3, Q4)

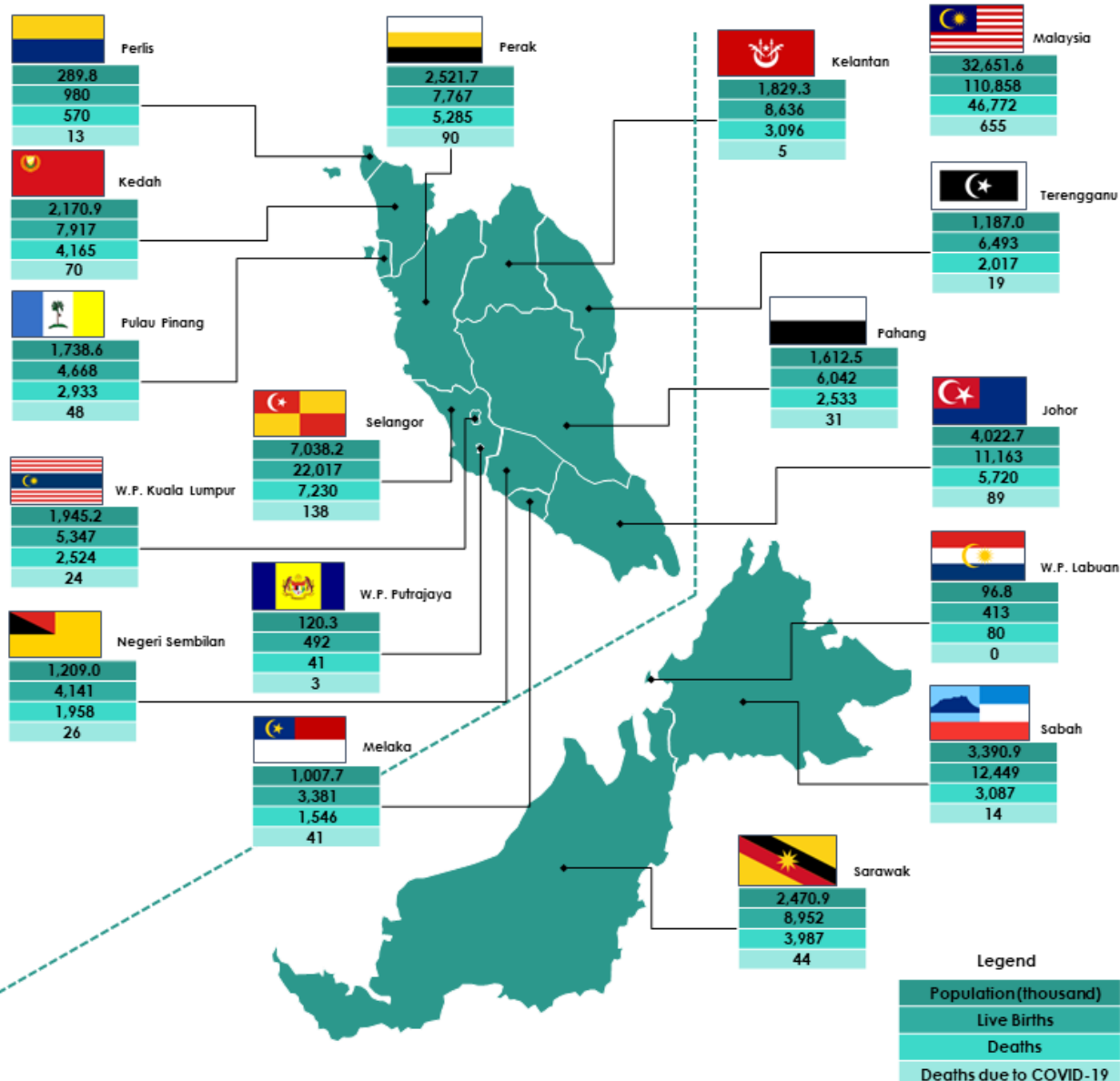


Live Births and Deaths (Number and Rate) by Quarter, 2010-2022^p, Malaysia



Source: Demographic Statistics Malaysia, Second Quarter 2022, Department of Statistics Malaysia (DOSM)

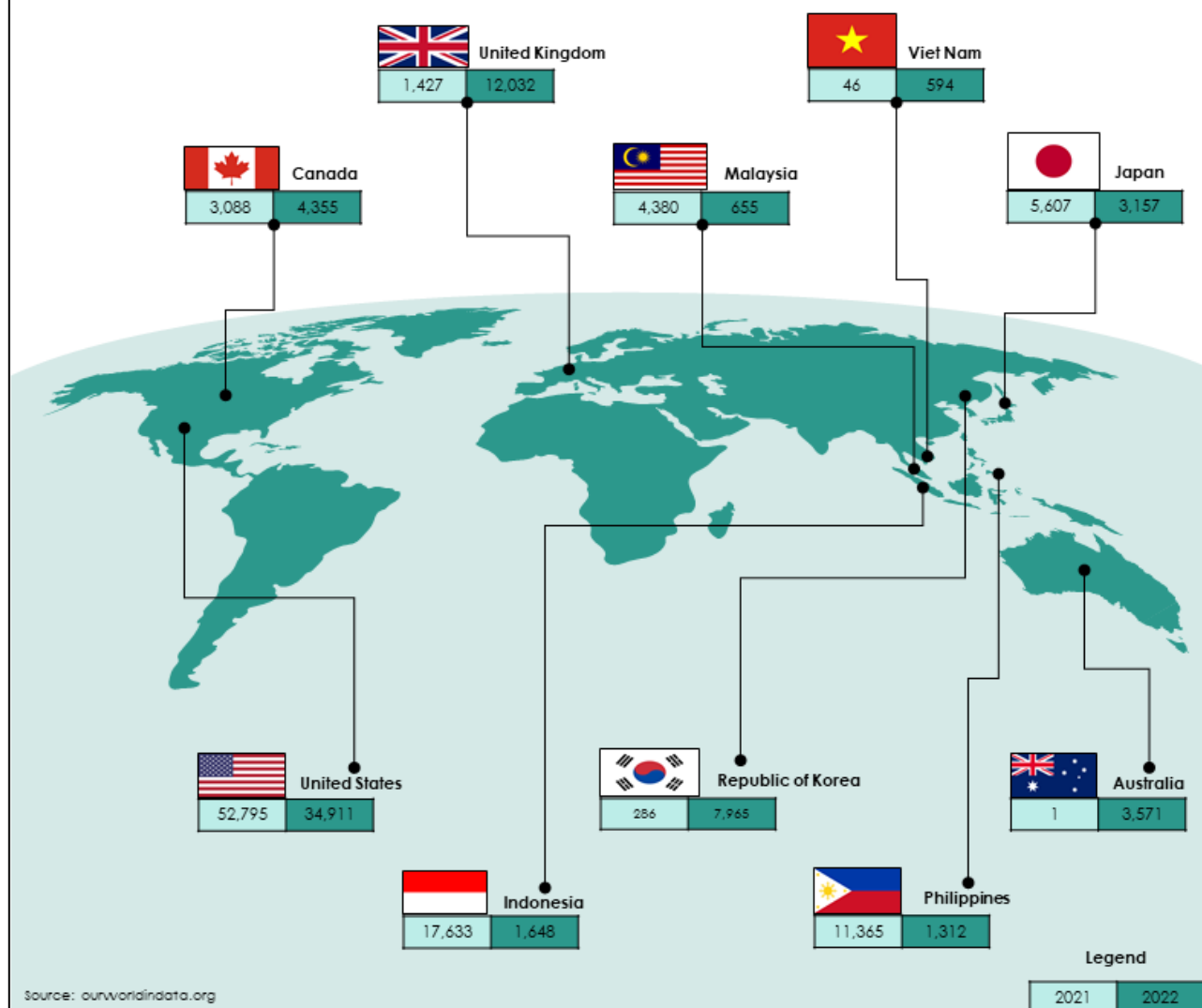
Demographic Statistics by State, Second Quarter 2022^P, Malaysia



- Three states with the highest population in the second quarter 2022 were Selangor (21.6%) followed by Johor (12.3%) and Sabah (10.4%).
- Selangor recorded the highest number of live births with 22,017 births (19.9%) while Wilayah Persekutuan Labuan recorded the lowest births with 413 births (0.4%).
- In terms of death, Selangor recorded the highest number with 7,230 deaths (15.5%) while Wilayah Persekutuan Putrajaya recorded the lowest deaths with 41 deaths (0.1%).
- Selangor recorded the highest number of COVID-19 deaths (138 deaths) while no death was recorded in Wilayah Persekutuan Labuan.

Source: Demographic Statistics Malaysia, Second Quarter 2022, Department of Statistics Malaysia (DOSM)

Deaths due to COVID-19 in the Second Quarter for Selected Countries



For more information on demographic in Malaysia, please visit:

MyDemography
www.dosm.gov.my/mydemography



- ✓ MyPopulation
- ✓ MyVital
- ✓ MyAgeing
- ✓ MyGender

MyCOD
www.dosm.gov.my/mycod



- ✓ Statistics on causes of death by demographic characteristics.

Notes:

^P Preliminary

- Quarterly period: Q1=January–March; Q2=April–June; Q3=July–September; Q4=October–December.
- The added total may differ due to rounding.
- These statistics was revised based on MyCensus 2020.

Source: Demographic Statistics Malaysia, Second Quarter 2022, Department of Statistics Malaysia (DOSM)

Released By:

DEPARTMENT OF STATISTICS, MALAYSIA

#myHariBulan# #myBulan# #myTahun#

Contact person:

Baharudin Mohamad

Public Relation Officer

Strategic Communication and International Division

Department of Statistics, Malaysia

Tel : +603-8885 7942

Fax : +603-8888 9248

E-mail : baharudin[at]dosm.gov.my

Contact person:

Baharudin Mohamad

Public Relation Officer

Strategic Communication and International Division

Department of Statistics Malaysia

Tel : +603-8090 4681

Fax : +603-8888 9248

Email : baharudin[at]dosm.gov.my

Copyright ©2026 Department of Statistics Malaysia Official Portal. All Rights Reserved.