



## CONSUMER PRICE INDEX MALAYSIA JANUARY 2018



**Department of Statistics Malaysia**

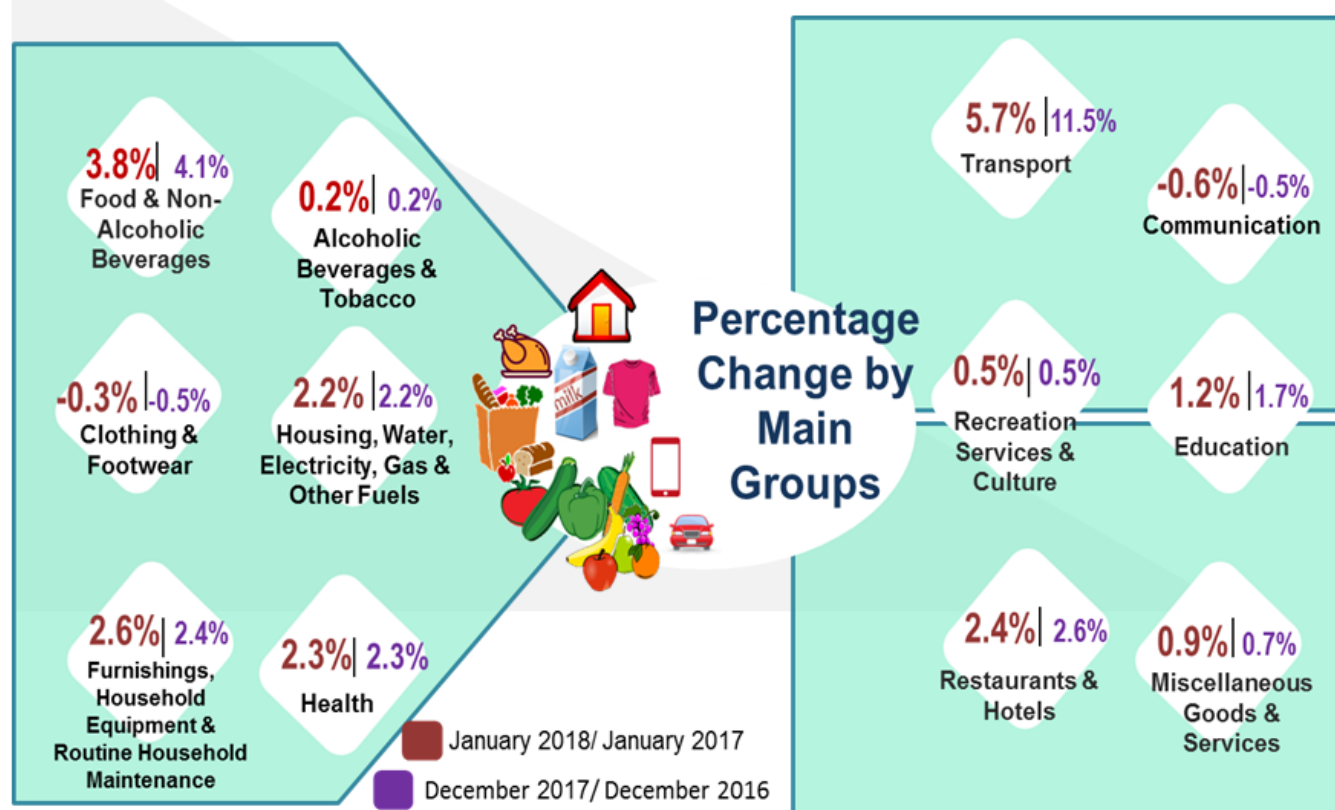
<https://www.dosm.gov.my>



@StatsMalaysia

# CONSUMER PRICE INDEX, JANUARY CPI increased **2.7%** in January 2018 as compared to January 2017

**2018**



Source: Malaysia's Consumer Price Index (2010=100), January 2018

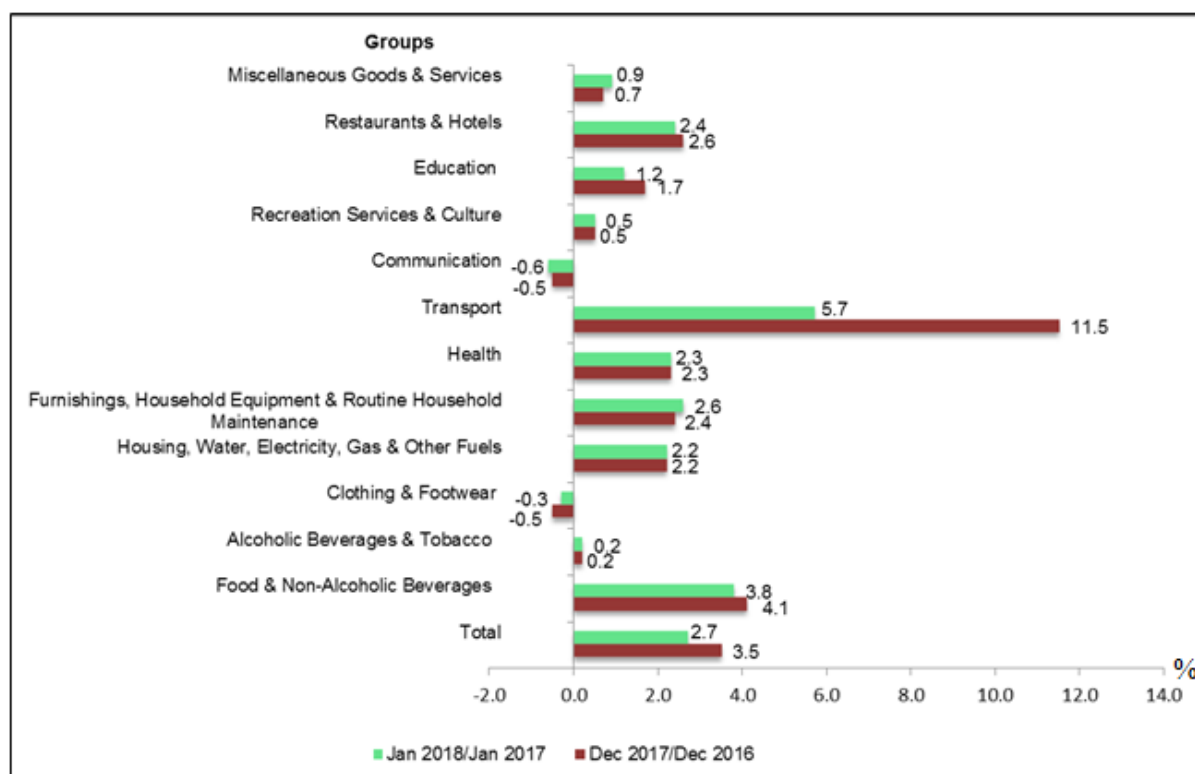
Commencing January 2018, the Malaysia's Consumer Price Index using the basket of goods and services that has been updated based on the Household Expenditure Survey 2016. The new basket comprises 552 items. Updating of the basket of goods and services aims to ensure the statistics reflect the current patterns in consumer expenditure.

## SUMMARY OF FINDINGS

The overall index for CPI increased by 2.7 per cent in January 2018 as compared to the corresponding month of the preceding year. The increase in the index was due to higher prices in ten main groups, i.e Transport (+5.7 per cent), Food & Non-Alcoholic Beverages (+3.8 per cent), Furnishings, Household Equipment & Routine Household Maintenance (+2.6 per cent), Restaurants and Hotels (+2.4 per cent), Health (+2.3 per cent), Housing, Water, Electricity, Gas & Other Fuels (+2.2 per cent), Education (+1.2 per cent), Miscellaneous Goods & Services (+0.9 per cent), Recreation Services & Culture (+0.5 per cent) and Alcoholic Beverages & Tobacco (+0.2 per cent). (Chart 1)

On a monthly basis, CPI rose by 0.3 per cent as compared to December 2017.

**Chart 1: Consumer Price Index (2010=100): Percentage Change by Main Groups, Malaysia, January 2018/January 2017**



## Index for Sub-Groups Food and Non-Alcoholic Beverages

The overall index for Food & Non-Alcoholic Beverages which accounted 29.5 per cent in the CPI weights, increased 3.8 per cent in January 2018. The increase was driven by food sub-group index which comprised of **Vegetables (+7.6 per cent)**, **Fish & Seafood (+5.0 per cent)**, **Milk & Eggs (+2.5 per cent)**, **Fruits (+2.2 per cent)** and **Sugar, Jam, Honey, Chocolate & Confectionery (+2.2 per cent)**. As for Food Away From Home index, it continued to rise in January 2018, an increase of 4.9 per cent.

**Table 1: Consumer Price Index (2010=100): Annual Percentage Change by Sub-Groups Food & Non-Alcoholic Beverages, Malaysia, January 2018/January 2017**

Sub-groups		Index	Year-on-Year Percentage Change		Month-on-Month Percentage Change	
	Wt	Jan 2018	Dec 2017/ Dec 2016	Jan 2018/ Jan 2017	Dec 2017/ Nov 2017	Jan 2018/ Dec 2017
Food & Non-Alcoholic Beverages	29.5	131.6	4.1	3.8	0.7	0.6
Food	28.4	132.5	4.2	3.9	0.8	0.6
Food At Home	16.9	131.3	3.5	3.4	0.9	0.8
Rice, Bread & Other Cereals	3.5	110.7	1.9	1.7	0.1	0.0
Meat	2.5	126.9	3.6	1.9	0.6	0.6
Fish & Seafood	4.0	151.6	6.9	5.0	0.7	0.9
Milk & Eggs	1.5	126.5	1.8	2.5	0.9	0.6
Oils & Fats	0.6	119.0	1.4	1.2	0.1	0.0
Fruits	1.2	131.7	3.0	2.2	-0.1	0.2
Vegetables	2.1	142.6	2.5	7.6	4.0	3.7
Sugar, Jam, Honey, Choc. & Confectionery	0.6	137.7	1.9	2.2	-0.1	0.4
Food Products n.e.c.	1.0	132.1	2.2	1.9	0.0	0.2
Food Away From Home	11.5	134.6	5.3	4.9	0.6	0.3
Coffee, Tea, Cocoa & Non-Alcoholic Beverages	1.1	112.3	0.1	0.6	0.0	0.4

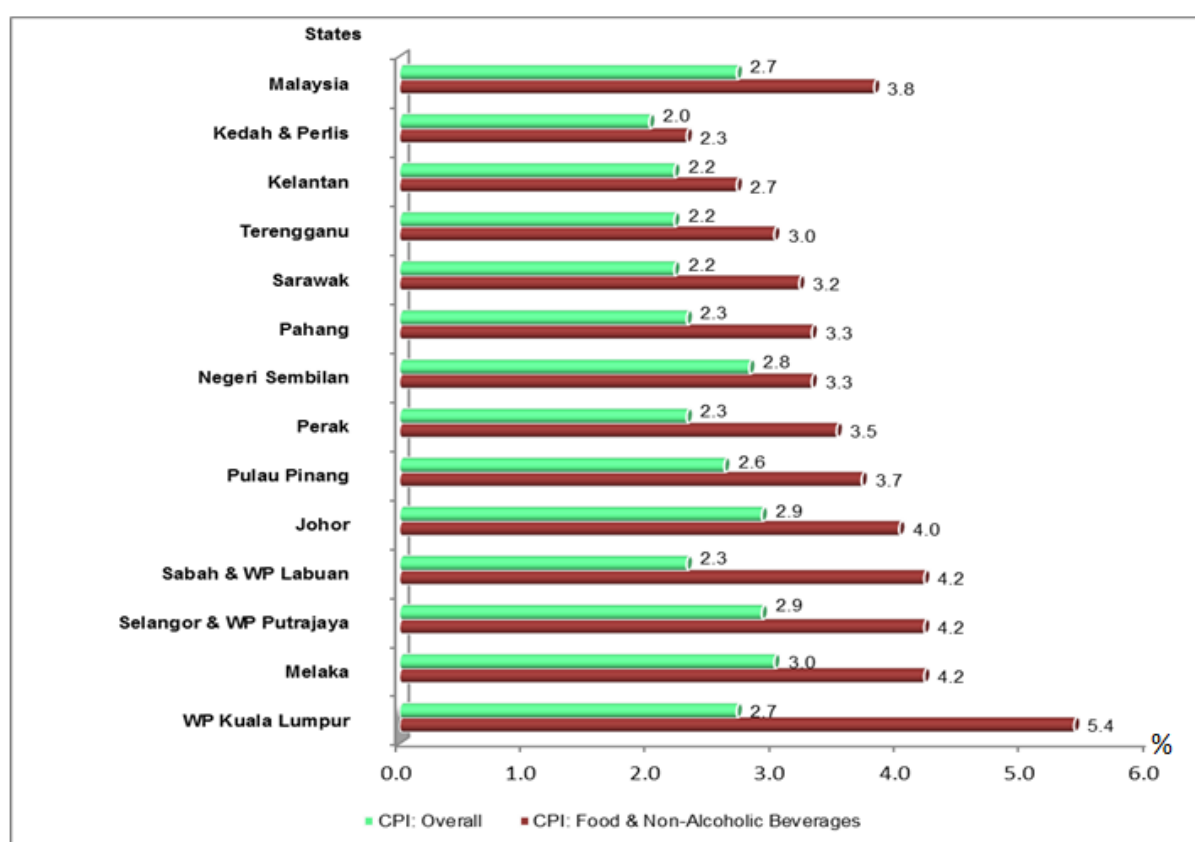
Among the index of food items which recorded notable increases in January 2018 as compared to the same period of last year were **Spinach (+36.2 per cent)**, **Long Beans (+33.6 per cent)**, **Choy Sum (+23.7 per cent)**, **Cuttlefish (+11.1 per cent)**, **Hen's Eggs (+6.5 per cent)**, **Hardtail Scad (Fish) (+4.4 per cent)**, **Meat (+4.2 per cent)**, **Indian Mackerel (Fish) (+2.8 per cent)**, **Chicken (+1.7 per cent)** and **Spanish Mackerel (Fish) (+1.5 per cent)**. Meanwhile, decreases were registered in the index of some food items such as **Round Cabbage (-21.1 per cent)** and **Watermelon (-3.3 per cent)**.

## States Index

In terms of overall CPI, four states surpassed the national CPI rate of 2.7 per cent recorded in January 2018 as compared to January 2017. The states are Melaka (+3.0 per cent), Johor (+2.9 per cent), Selangor & Wilayah Persekutuan Putrajaya (+2.9 per cent) and Negeri Sembilan (+2.8 per cent).

Meanwhile, the higher increase in the index for Food & Non-Alcoholic Beverages was reflected in most states in Malaysia. Five states recorded higher increases for Food & Non-Alcoholic Beverages index above the national index level (+3.8 per cent) for January 2018 as compared with the corresponding month in 2017. The index for Food & Non-Alcoholic Beverages rose 5.4 per cent in Wilayah Persekutuan Kuala Lumpur, 4.2 per cent in Melaka, 4.2 per cent in Selangor & Wilayah Persekutuan Putrajaya, 4.2 per cent di Sabah & Wilayah Persekutuan Labuan and 4.0 per cent in Johor. (Chart 2)

**Chart 2: Consumer Price Index (2010=100): Annual Percentage Change for Food & Non-Alcoholic Beverages by State, January 2018/January 2017**



## Core Index

Core inflation rose 2.2 per cent in January 2018 as compared with the same month of the previous year. Among the major groups which influenced the higher core rate were price increases of Food & Non-Alcoholic Beverages (+3.5 per cent), Furnishings, Household Equipment & Routine Household Maintenance (+2.6 per cent), Housing, Water, Electricity, Gas & Other Fuels (+2.5 per cent), Restaurants & Hotels (+2.4 per cent), Health (+2.3 per cent) and Transport (+2.0 per cent). Core inflation differs from overall CPI (headline CPI) where the former is calculated by excluding prices for goods and services that are subject to fluctuations which considered transitory in nature and do not have a lasting impact on the underlying trend in inflation. These include nine of the CPI's most volatile items of fresh food, as well as administered prices of goods and services.

**Table 2: Consumer Price Index (2010=100): Percentage Change of Headline CPI and Core Index by Main Groups, Malaysia, January 2018/January 2017**

Main Groups	HEADLINE CPI				CORE INDEX	
	Wt	Index	Percentage Change		Core Index Wt.	Year-on-Year Percentage Change
			Jan 2018	Jan 2018/ Dec 2017		Jan 2018/ Jan 2017
<b>Total</b>	<b>100.0</b>	<b>121.3</b>	<b>0.3</b>	<b>2.7</b>	<b>100.0</b>	<b>2.2</b>
Food & Non-Alcoholic Beverages	29.5	131.6	0.6	3.8	26.5	3.5
Alcoholic Beverages & Tobacco	2.4	165.6	0.0	0.2	-	-
Clothing and Footwear	3.2	98.0	0.2	-0.3	4.5	-0.3
Housing, Water, Electricity, Gas & Other Fuels	23.8	117.7	0.0	2.2	26.5	2.5
Furnishings, Household Equipment & Routine Household Maintenance	4.1	115.8	0.5	2.6	5.5	2.6
Health	1.9	122.4	0.3	2.3	2.6	2.3
Transport	14.6	120.0	0.4	5.7	6.5	2.0
Communication	4.8	97.3	-0.1	-0.6	6.5	-0.6
Recreation Services & Culture	4.8	111.8	0.1	0.5	6.6	0.5
Education	1.3	117.7	0.6	1.2	1.8	1.2
Restaurants and Hotels	2.9	129.5	0.1	2.4	3.9	2.4
Miscellaneous Goods & Services	6.7	114.6	0.3	0.9	9.1	0.9

## Average Price for Selected Items in Malaysia, January 2018 (RM)

Num.	Selected Items	Unit	Percentage Change of Prices				
			Jan 2018	Dec 2017	Jan 2017	Jan 2018/ Dec 2017	Jan 2018/ Jan 2017
1	Spinach	Kg	5.38	4.94	4.25	8.9	26.6
2	Ladyfinger	Kg	8.36	7.88	7.06	6.1	18.4
3	Broccoli	Kg	10.08	12.03	9.12	-16.2	10.5
4	Chilli (Burung/padi) Import)	Kg	2.43	2.38	2.60	2.1	-6.5
5	Chilli (Kulai)	Kg	16.06	15.37	14.58	4.5	10.2
6	Red Chilli (Tempatan/minyak)	Kg	14.01	13.02	12.70	7.6	10.3
7	Long Beans	Kg	7.65	7.19	5.57	6.4	37.3
8	French Beans	Kg	9.50	9.15	7.81	3.8	21.6
9	Round Cabbage	Kg	4.19	4.06	5.32	3.2	-21.2
10	Cauliflower	Kg	7.45	7.53	7.55	-1.1	-1.3
11	Carrot	Kg	4.37	4.40	4.49	-0.7	-2.7
12	Choy Sum	Kg	5.60	5.45	4.36	2.8	28.4
13	Tomatoes	Kg	6.08	4.98	5.04	22.1	20.6
14	Brinjals	Kg	7.85	7.09	6.27	10.7	25.2
15	Cucumber	Kg	3.44	3.33	2.96	3.3	16.2
16	Apple Fuji	Each	1.71	1.70	1.64	0.6	4.3
17	Apple (Green Skin)	Each	1.14	1.12	1.10	1.8	3.6
18	Apple (Red Skin, Gala)	Each	1.23	1.22	1.20	0.8	2.5
19	Papaya	Kg	3.18	3.13	3.01	1.6	5.6
20	Pineapple	Kg	3.54	3.44	3.32	2.9	6.6
21	Pisang Emas (Banana)	Kg	3.95	3.91	3.77	1.0	4.8
22	Pisang Rastali (Banana)	Kg	3.85	3.78	3.71	1.9	3.8
23	Pisang Berangan (Banana)	Kg	4.13	4.07	4.06	1.5	1.7
24	Watermelon	Kg	2.77	2.63	2.56	5.3	8.2
25	Coconut Grated	Kg	7.29	7.24	6.68	0.7	9.1
26	Fresh Coconut Milk	Kg	10.34	10.24	9.52	1.0	8.6
27	Hen's Egg Grade A	10 each	3.94	3.88	3.72	1.5	5.9
28	Hen's Egg Grade B	10 each	3.80	3.76	3.60	1.1	5.6
29	Hen's Egg Grade C	10 each	3.69	3.60	3.44	2.5	7.3
30	Black Pomfret (Fish)	Kg	24.67	24.01	23.75	2.7	3.9
31	Hardtail Scad (Fish)	Kg	10.03	9.88	9.34	1.5	7.4
32	Indian Mackerel (Fish)	Kg	14.46	14.06	13.68	2.8	5.7
33	Threadfin Bream (Fish)	Kg	13.67	13.03	12.50	4.9	9.4
34	Red Snapper (Fish)	Kg	28.49	27.95	27.07	1.9	5.2
35	Spanish Mackerel (Fish)	Kg	29.93	29.28	27.92	2.2	7.2
36	Longtail Tuna (Fish)	Kg	12.14	11.94	11.08	1.7	9.6
37	Chicken	Kg	8.71	8.64	8.56	0.8	1.8
38	Beef	Kg	30.27	29.70	28.59	1.9	5.9
39	Prawns	Kg	39.11	37.66	38.64	3.9	1.2
40	Cuttlefish Fresh	Kg	22.86	22.67	20.33	0.8	12.4
41	Nasi Lemak	Each	2.64	2.57	2.52	2.7	4.8
42	Roti Canai	Each	1.12	1.11	1.09	0.9	2.8
43	Coffee Powder (250 gm)	250 gm	4.57	4.58	4.57	-0.2	0.0
44	Drinking Water (500 ml)	500 ml	0.75	0.75	0.75	0.0	0.0
45	Satay	Each	0.71	0.70	0.67	1.4	6.0
46	Chicken Rice	Plate	5.12	5.05	4.89	1.4	4.7
47	Teh Tarik	Cup	1.54	1.54	1.50	0.0	2.7
48	Teh-O	Cup	1.25	1.24	1.21	0.8	3.3
49	Milo	Cup	1.89	1.89	1.83	0.0	3.3

**Released By:**

**DATO' SRI DR. MOHD UZIR MAHIDIN**  
**CHIEF STATISTICIAN MALAYSIA**  
**DEPARTMENT OF STATISTICS, MALAYSIA**  
**#myHariBulan# #myBulan# #myTahun#**

**Contact person:**

Ho Mei Kei  
Public Relation Officer  
Strategic Communication and International Division  
Department of Statistics, Malaysia  
**Tel** : +603-8885 7942  
**Fax** : +603-8888 9248  
**Email** : mkho[at]stats.gov.my

**Contact person:**

Baharudin Mohamad  
Public Relation Officer  
Strategic Communication and International Division  
Department of Statistics Malaysia  
Tel : +603-8090 4681  
Fax : +603-8888 9248  
Email : baharudin[at]dosm.gov.my

**Copyright ©2026 Department of Statistics Malaysia Official Portal. All Rights Reserved.**