



## MONTHLY MANUFACTURING STATISTICS MALAYSIA, JANUARY 2016

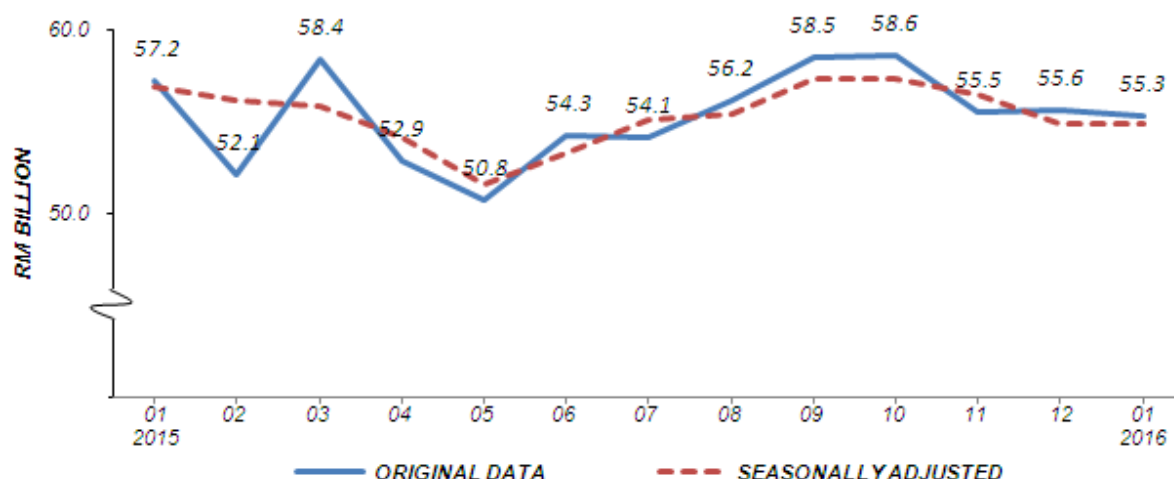
### PERFORMANCE IN JANUARY 2016

#### 1. SALES VALUE

The sales value of the Manufacturing sector in January 2016 decreased by 3.4% (RM1.9 billion) to record RM55.3 billion as compared to RM57.2 billion reported a year ago (Chart 1). Meanwhile, month-on-month basis, the sales value decreased by 0.6% (RM0.3 billion) compared with the preceding month. The sales value in December 2015 remained unchanged.

On a seasonally adjusted month-on-month, the sales value in January 2016 decreased by 0.1%. Year-on-year, the decrease in sales value in January 2016 was due to the decrease in Petroleum, Chemical, Rubber and Plastic Products (-22.7%) and Transport Equipment & Other Manufactures (-5.2%).

**Chart 1 : Sales Value of the Manufacturing Sector**

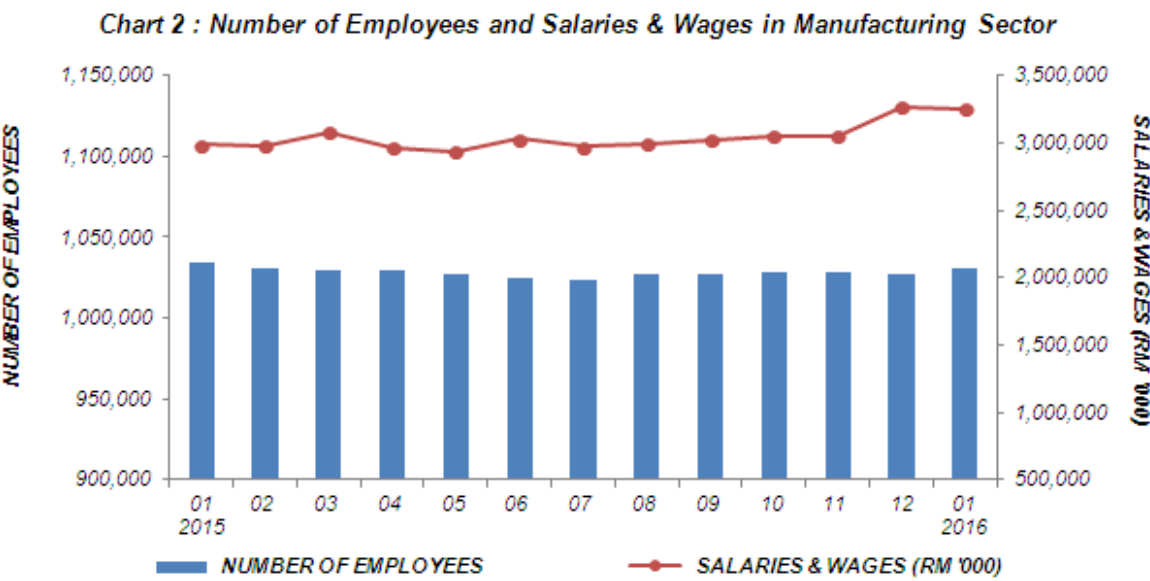


2. NUMBER OF EMPLOYEES

Total employees engaged in the Manufacturing sector in January 2016 was 1,030,153 persons, a decrease of 0.4% or 4,436 persons as compared to 1,034,589 persons in January 2015 (Chart 2). Meanwhile, month-on-month basis, the number of employees increased by 0.3% as compared to 1,027,044 persons in the preceding month.

3. SALARIES & WAGES

Year-on-year basis, salaries & wages paid in January 2016 increased by 8.9% (RM265.0 million) as compared with the corresponding month of the previous year. Meanwhile, month-on-month basis, the total amount paid in January 2016, decreased by 0.3% (RM9.7 million) to register RM3,251.0 million.

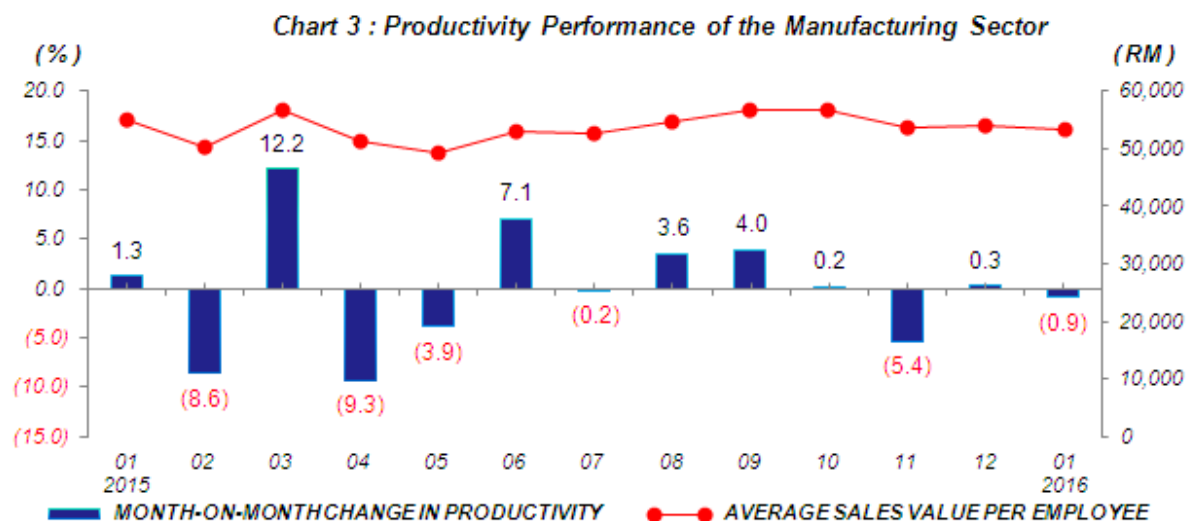


#### 4. AVERAGE SALARIES & WAGES PER EMPLOYEE

The average salaries & wages paid per employee increased by 9.4% in January 2016 as compared to the same month in 2015. Meanwhile, average salaries & wages paid per employee registered RM3,156 in January 2016, a decrease of 0.6% compared to previous month.

#### 5. PRODUCTIVITY

Productivity or average sales value per employee in January 2016 decreased by 3.0% as compared with the same month of the previous year. Meanwhile, productivity in January 2016 decreased by 0.9% month-on-month to register RM53,653 (Chart 3).



**\* Notes:**

Data for January 2016 is **provisional**. The data will be updated based on the latest available figures and subsequently published in the February 2016 publication.

**THE OFFICE OF CHIEF STATISTICIAN MALAYSIA**  
**DEPARTMENT OF STATISTICS MALAYSIA**  
**11 MARCH 2016**

**Contact person:**

Ho Mei Kei  
Public Relation Officer  
Corporate and User Services Division  
Department of Statistics, Malaysia  
**Tel :** +603-8885 7942  
**Fax :** +603-8888 9248  
**Email :** mkho@stats.gov.my

**Contact person:**

Baharudin Mohamad  
Public Relation Officer  
Strategic Communication and International Division  
Department of Statistics Malaysia

Tel : +603-8090 4681

Fax : +603-8888 9248

Email : baharudin[at]dosm.gov.my

**Copyright ©2025 Department of Statistics Malaysia Official Portal. All Rights Reserved.**