



MINISTRY OF ECONOMY
DEPARTMENT OF STATISTICS MALAYSIA

MEDIA STATEMENT

BUILDING COST INDEX, JANUARY 2026

The unit price index of cement recorded an increase between 0.2 per cent to 1.7 per cent in January 2026

PUTRAJAYA, 11TH FEBRUARY 2026 – The Department of Statistics Malaysia (DOSM) published **SPECIAL RELEASE FOR BUILDING AND STRUCTURAL WORKS, JANUARY 2026**. This report provides the unit price index of major building materials and the Building Material Cost Index (BCI) by building category and region.

In a statement today, Chief Statistician Malaysia, Dato' Sri Dr. Mohd Uzir Mahidin mentioned that the unit price index of cement recorded an increase in January 2026, ranging from 0.2 per cent to 1.7 per cent as compared to the previous month. The highest increase in the price index of this material was recorded in Selangor, W.P. Kuala Lumpur, Melaka & Negeri Sembilan (1.7%), followed by Perak (1.6%) and Sandakan (0.8%).

The Chief Statistician of Malaysia also informed that the unit price index of sand showed a slight increase in January 2026, with month-on-month change ranging from 0.5 per cent to 3.3 per cent in all areas in Peninsular Malaysia. Meanwhile, the unit price index of sand remained unchanged in Sabah and Sarawak.

The unit price index of steel recorded a slight decrease in January 2026, ranging from negative 0.6 per cent to negative 3.0 per cent as compared to the previous month. In addition, the price index of steel & metal sections also registered a decrease in January 2026, with month-on-month changes between negative 0.3 per cent to negative 1.6 per cent across all areas in Peninsular Malaysia, Sabah and Sarawak.

An annual comparison for the period of January 2025 and January 2026 has indicated that the unit price index for steel recorded a decline ranging from negative 1.1 per cent to negative 7.6 per cent involving most areas in Peninsular Malaysia, Sabah and Sarawak. The highest decrease in the unit price index for steel was observed in Miri (-7.6%) and followed by Kuching and Sibü (-7.4%), respectively and Kota Kinabalu (-7.2%).

Nevertheless, the year-on-year comparison of the unit price index of cement increased between 0.4 per cent to 5.9 per cent in January 2026 as compared to the same month last year across all areas in Peninsular Malaysia, Sabah and Sarawak. The highest increase was observed in Pahang (5.9%) followed by Perak (5.1%) and Selangor, W.P. Kuala Lumpur, Melaka & Negeri Sembilan (4.9%).

The Chief Statistician of Malaysia also mentioned that the average price per unit of steel, consisting of mild steel round bars and Mycon 60 high tensile deformed bars, recorded a decrease of negative 1.7 per cent with an average price of RM3,454.00 per metric tonne as compared to the previous month (December 2025: RM3,512.10 per metric tonne). In addition, the average price of Ordinary Portland cement showed an increase (3.1%) with an average price of RM25.30 per 50 kg bag, as compared to December 2025 (RM24.55 per 50 kg bag).

A monthly comparison of BCI with steel bars for all building categories in Peninsular Malaysia recorded a slight increase ranging from 0.1 per cent to 0.6 per cent in January 2026 as compared to the previous month. The increase for BCI with steel was recorded for all building categories and areas in Peninsular Malaysia.

The BCI with steel bars in Sabah recorded a slight increase 0.1 per cent to 1.4 per cent for all building categories in January 2026 as compared to the previous month.

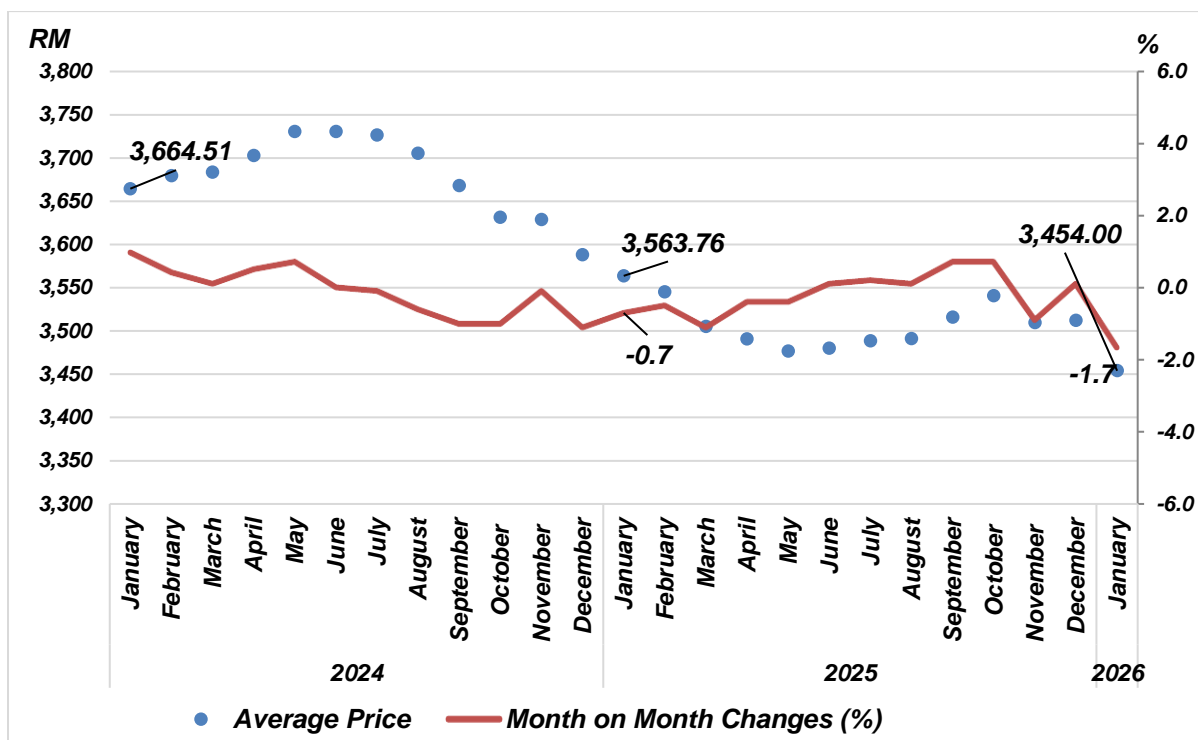
A month on month comparison of BCI with steel bars in Sarawak registered a slight decrease ranging from negative 0.5 per cent to negative 1.5 per cent for all categories of buildings in Sibu. In addition, the BCI for almost all building categories in Kuching and Miri recorded declines ranging from negative 0.1 per cent to negative 1.2 per cent, (except for the timber building and timber piling categories, which remained unchanged).

The Department of Statistics Malaysia (DOSM) is conducting the **Economic Census 2026 (BE2026)**, with themed “**Data Nadi Ekonomi Rakyat**”. The sixth Economic Census, will be carried out from **5th January to 31st October 2026**. BE2026 aims to collect comprehensive and structured data from all registered and unregistered business establishments in Malaysia to assess the nation’s economic performance, structure and characteristics in an evidence-based manner.

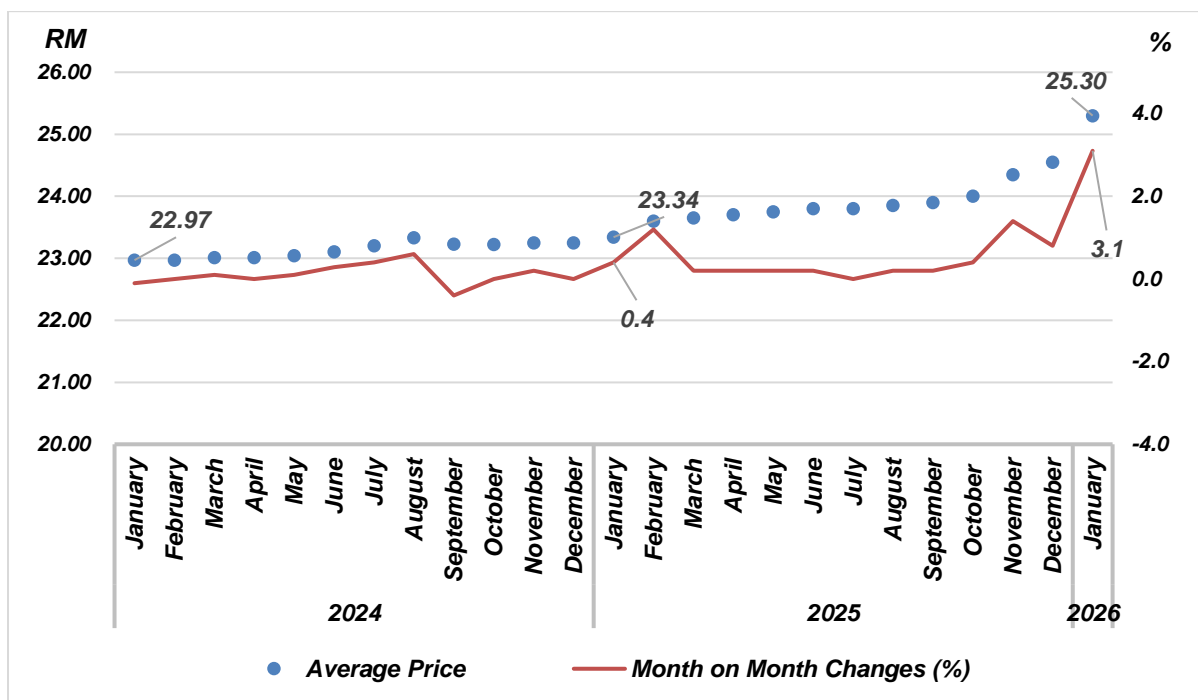
Malaysia has, for the first time, successfully secured the **top position** globally in the biennial **Open Data Inventory (ODIN) 2024/25** report released by Open Data Watch (ODW), surpassing 197 other countries. This achievement marks a significant leap from its 67th position in the ODIN 2022/23 assessment.

OpenDOSM NextGen is a medium that provides data catalogue and visualisations to facilitate users' analysis and can be accessed through <https://open.dosm.gov.my>.

**Chart 1: Average Price of Steel Bar, Malaysia,
January 2024 – January 2026**



**Chart 2: Average Price of Cement, Malaysia,
January 2024 – January 2026**



Released by:

**THE OFFICE OF CHIEF STATISTICIAN MALAYSIA
DEPARTMENT OF STATISTICS MALAYSIA
11 FEBRUARY 2026**