

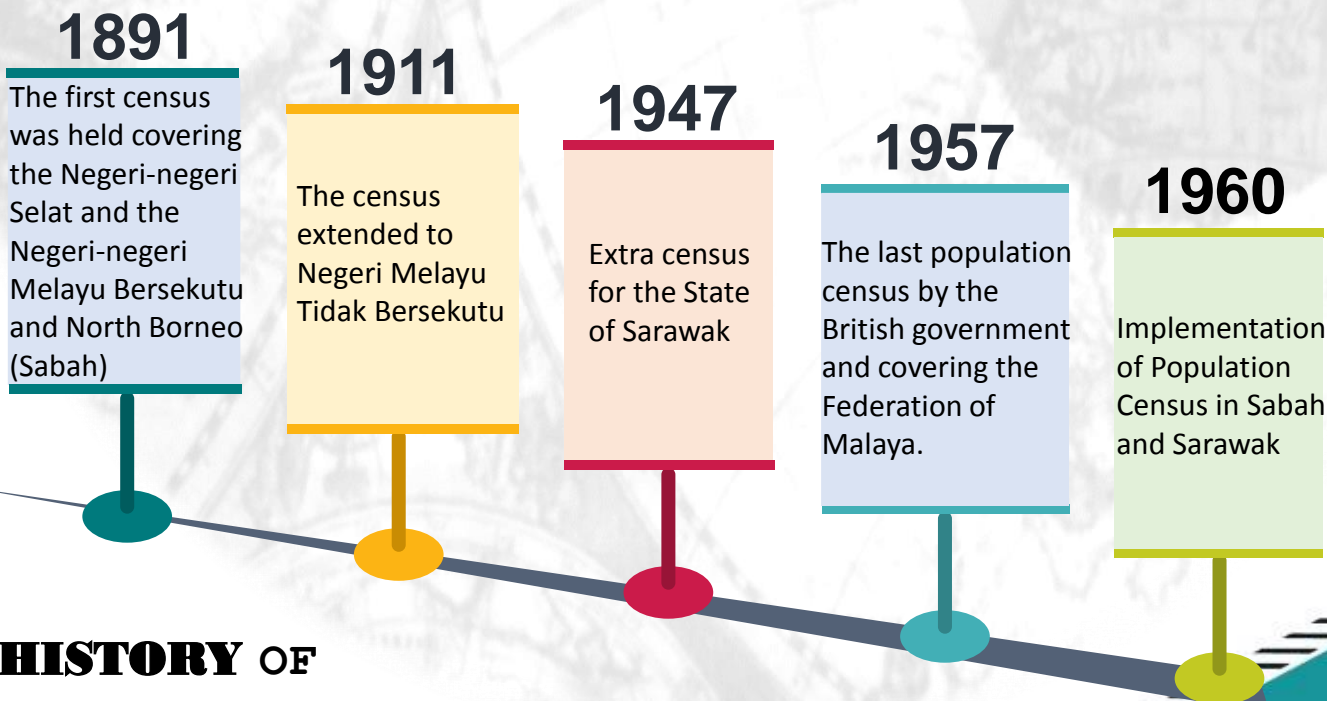
## DIGITAL PUBLICATION

# TOP 3 MOST POPULAR\* DIGITAL PUBLICATION



- 1 GENERAL REPORT POPULATION OF MALAYSIA, 1970, VOLUME 1 & 2
- 2 POPULATION AND HOUSING CENSUS OF MALAYSIA, 1970, VOLUME II – GENERAL HOUSING TABLES TOWNS, VILLAGES AND LOCAL COUNCIL AREAS, PART III - MALACCA
- 3 POPULATION AND HOUSING CENSUS OF MALAYSIA, 1980, POPULATION REPORT FOR ADMINISTRATIVE DISTRICTS - AGE, ETHNICITY, SEX, HOUSEHOLDS

\*Based on number of downloads



## HISTORY OF CENSUS ENUMERATION



1

The 1970 Population and Housing Census of Malaysia was the first such Malaysian Census to have been carried out since the formation of Malaysia in 1963.

2

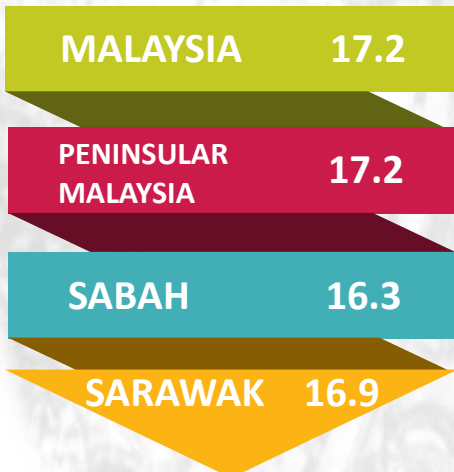
The first comprehensive and Census in Malaysia.

3

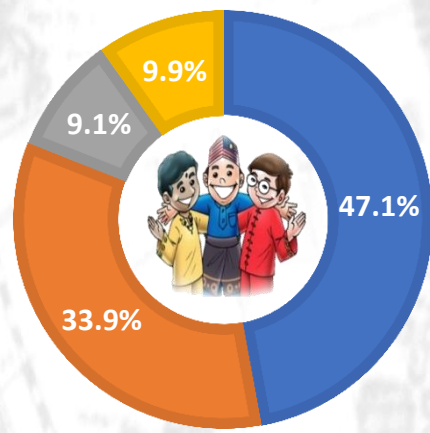
This publication explained on the coverage and quality of the data obtained as well as information on income and family planning practices.



### MEDIAN AGE

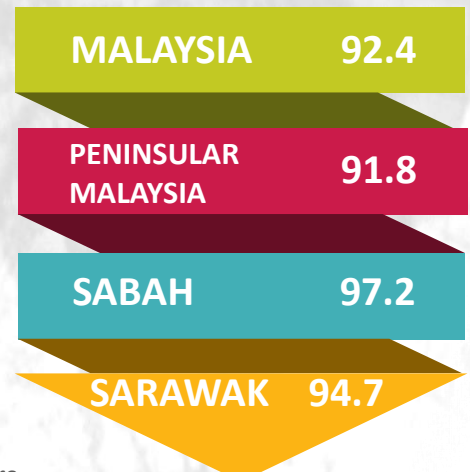


### COMPOSITION OF POPULATION

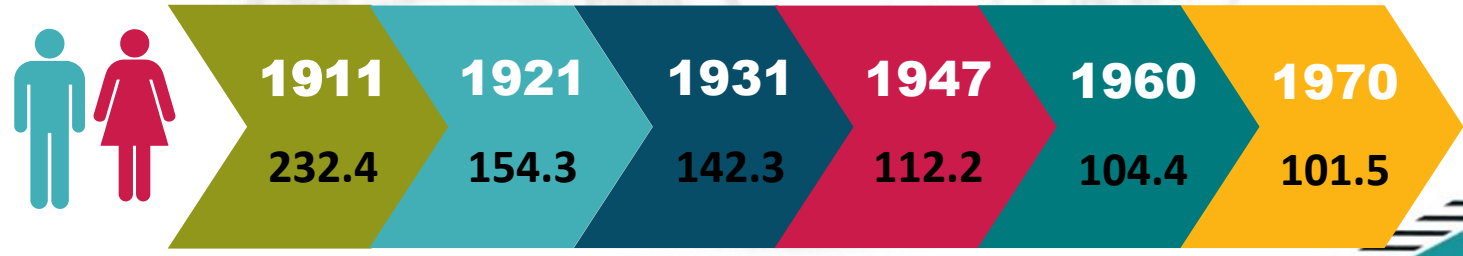


■ Malays ■ Chinese ■ Indians ■ Others

### AGE DEPENDENCY RATIO



### SEX RATIOS\* IN MALAYSIA, 1911 - 1970

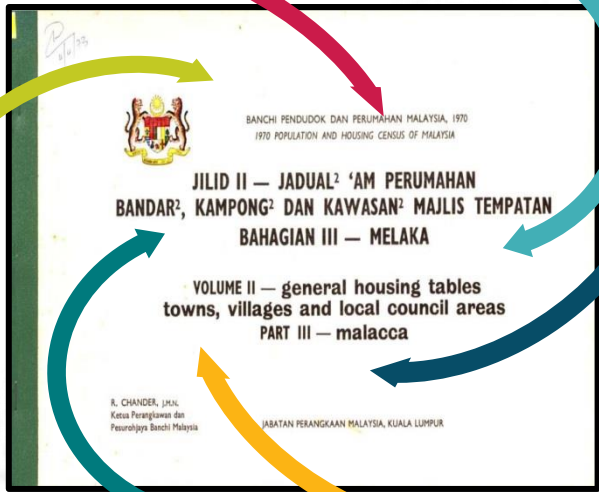


\* Number of male per 100 female



POPULATION & HOUSING CENSUS MALAYSIA 2020 YOUR DATA IS OUR FUTURE

2

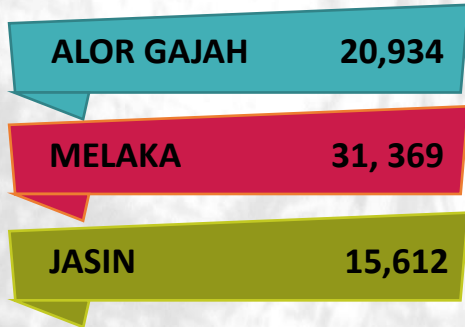


This publication is the second series for the State of Melaka published in July/August 1970.

Contains the findings obtained from the population census conducted in 1970.

Data was presented up to the Administrative District level.

### PRIVATE LIVING QUARTERS



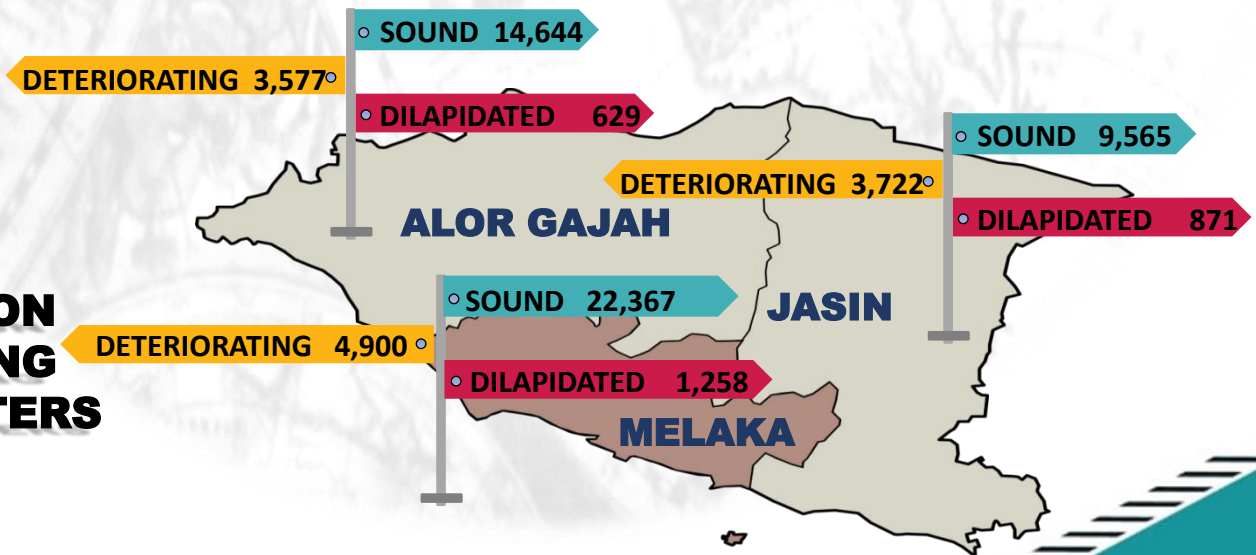
### TOTAL LIVING QUARTERS



### NON-PRIVATE LIVING QUARTERS

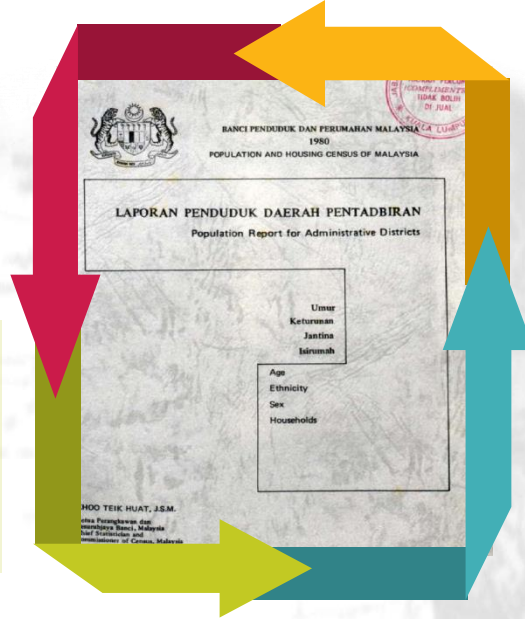


### CONDITION OF LIVING QUARTERS



Figures were based on the 1980 Census

SOURCE



13,136,109

NUMBER OF POPULATION

2,516,295

NUMBER OF HOUSEHOLD

128

NUMBER OF ADMINISTRATIVE DISTRICT

### COMPOSITION OF POPULATION BY SEX, MALAYSIA, 1980



50.2 %



49.8 %

### COMPOSITION OF POPULATION BY STRATUM, MALAYSIA, 1980

34.2 %

65.8 %



URBAN



RURAL

#### SEX RATIOS

Number of male per 100 female.

#### LIVING QUARTERS

Forms of construction that built or modified for residence / bed.

DO YOU KNOW ?

#### HOUSEHOLD

A group of persons who live together and make common provision for food and other essentials of living.

#### MEDIAN AGE

The age that divides the distribution of the population into two, such that half the population is below this age and half is above.

#### DEPENDENCY RATIO

The ratio of the number of persons below age 15 years and the number of persons aged 65 years and over to the number of persons in the working age group of 15-64 years.

